



ELECTRONIC COPY

LG643431767
Report verification at igi.org



July 20, 2024
IGI Report Number LG643431767
Description LABORATORY GROWN DIAMOND
Shape and Cutting Style ROUND BRILLIANT
Measurements 9.06 - 9.12 X 5.65 MM
GRADING RESULTS
Carat Weight 2.91 CARATS
Color Grade FANCY INTENSE PINK
Clarity Grade VS 2
Cut Grade IDEAL

July 20, 2024
IGI Report Number LG643431767
Description LABORATORY GROWN DIAMOND
Shape and Cutting Style ROUND BRILLIANT
Measurements 9.06 - 9.12 X 5.65 MM

GRADING RESULTS

Carat Weight 2.91 CARATS
Color Grade FANCY INTENSE PINK
Clarity Grade VS 2
Cut Grade IDEAL

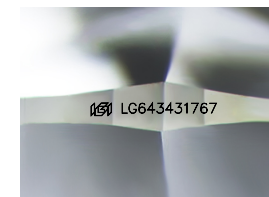
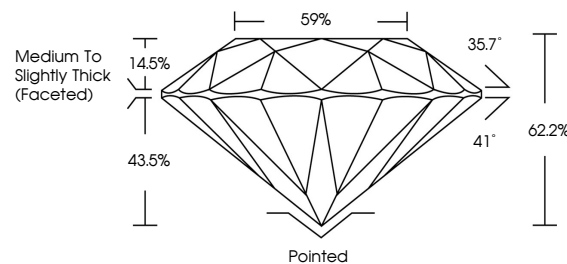
ADDITIONAL GRADING INFORMATION

Polish EXCELLENT
Symmetry EXCELLENT
Fluorescence SLIGHT
Inscription(s) IGI LG643431767

Comments: This Laboratory Grown Diamond was created by Chemical Vapor Deposition (CVD) growth process.
Indications of post-growth treatment.

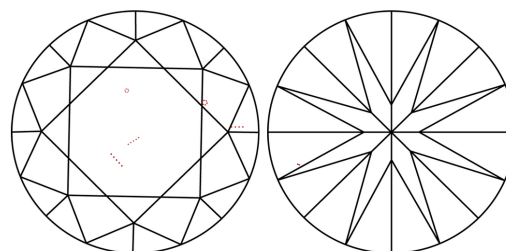
Secondary color: Brown

PROPORTIONS



Sample Image Used

CLARITY CHARACTERISTICS



KEY TO SYMBOLS

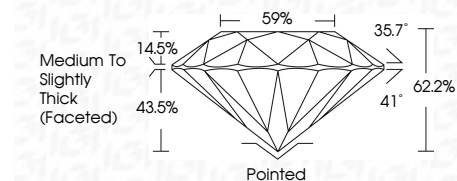
Red symbols indicate internal characteristics.
Green symbols indicate external characteristics.

COLOR

D E F G H I J Faint Very Light Light

CLARITY

Table with columns for clarity grades: IF, VS 1-2, VS 1-2, SI 1-2, I 1-3 and corresponding descriptions: Internally Flawless, Very Very Slightly Included, Very Slightly Included, Slightly Included, Included



ADDITIONAL GRADING INFORMATION

Polish EXCELLENT
Symmetry EXCELLENT
Fluorescence SLIGHT
Inscription(s) IGI LG643431767
Comments: This Laboratory Grown Diamond was created by Chemical Vapor Deposition (CVD) growth process.
Indications of post-growth treatment.
Secondary color: Brown



July 20, 2024
IGI Report No LG643431767
ROUND BRILLIANT
9.06 - 9.12 X 5.65 MM
2.91 CARATS
FANCY INTENSE PINK
VS 2
IDEAL
62.2%
59%
Medium To Slightly Thick (Faceted)
Pointed
EXCELLENT
EXCELLENT
SLIGHT
IGI LG643431767
Comments: This Laboratory Grown Diamond was created by Chemical Vapor Deposition (CVD) growth process.
Indications of post-growth treatment.
Secondary color: Brown