



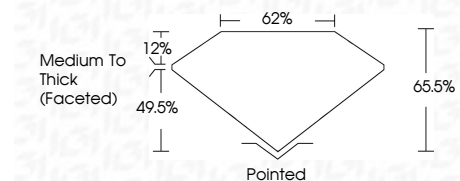
ELECTRONIC COPY

LG643431866 Report verification at igi.org



July 13, 2024 IGI Report Number LG643431866 Description LABORATORY GROWN DIAMOND Shape and Cutting Style CUSHION BRILLIANT Measurements 10.14 X 8.09 X 5.30 MM

GRADING RESULTS Carat Weight 3.38 CARATS Color Grade G Clarity Grade VVS 2

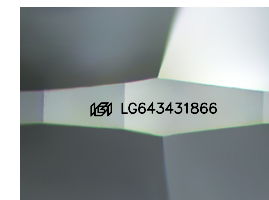


ADDITIONAL GRADING INFORMATION Polish EXCELLENT Symmetry EXCELLENT Fluorescence NONE Inscription(s) LG643431866 Comments: This Laboratory Grown Diamond was created by Chemical Vapor Deposition (CVD) growth process. Type IIa



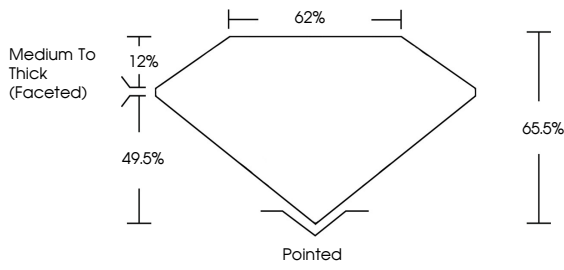
July 13, 2024 IGI Report No LG643431866 CUSHION BRILLIANT 10.14 X 8.09 X 5.30 MM 3.38 CARATS G VVS 2 65.5% 62% Medium To Thick (Faceted) Pointed EXCELLENT EXCELLENT NONE NONE LG643431866

Comments: This Laboratory Grown Diamond was created by Chemical Vapor Deposition (CVD) growth process. Type IIa

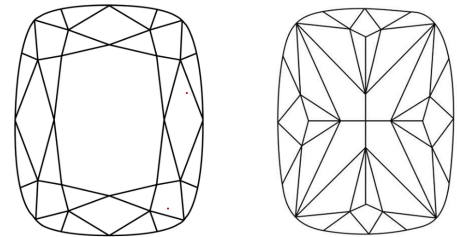


Sample Image Used

PROPORTIONS



CLARITY CHARACTERISTICS



KEY TO SYMBOLS

Red symbols indicate internal characteristics. Green symbols indicate external characteristics.

COLOR

Color scale table with categories D, E, F, G, H, I, J, Faint, Very Light, Light

CLARITY

Clarity scale table with categories IF, VVS 1-2, VS 1-2, SI 1-2, I 1-3, Internally Flawless, Very Very Slightly Included, Very Slightly Included, Slightly Included, Included



July 13, 2024 IGI Report No LG643431866 CUSHION BRILLIANT 10.14 X 8.09 X 5.30 MM 3.38 CARATS G VVS 2 65.5% 62% Medium To Thick (Faceted) Pointed EXCELLENT EXCELLENT NONE NONE LG643431866

Comments: This Laboratory Grown Diamond was created by Chemical Vapor Deposition (CVD) growth process. Type IIa