



ELECTRONIC COPY

LG643432347 Report verification at igi.org



July 18, 2024
IGI Report Number LG643432347
Description LABORATORY GROWN DIAMOND
Shape and Cutting Style CUT CORNERED RECTANGULAR MODIFIED BRILLIANT
Measurements 6.74 X 4.82 X 3.37 MM
GRADING RESULTS
Carat Weight 1.03 CARAT
Color Grade FANCY INTENSE YELLOW
Clarity Grade VVS 2

LABORATORY GROWN DIAMOND REPORT

July 18, 2024
IGI Report Number LG643432347
Description LABORATORY GROWN DIAMOND
Shape and Cutting Style CUT CORNERED RECTANGULAR MODIFIED BRILLIANT
Measurements 6.74 X 4.82 X 3.37 MM

GRADING RESULTS

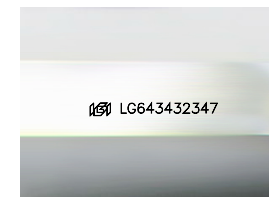
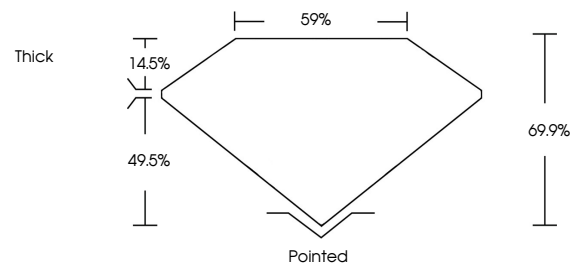
Carat Weight 1.03 CARAT
Color Grade FANCY INTENSE YELLOW
Clarity Grade VVS 2

ADDITIONAL GRADING INFORMATION

Polish EXCELLENT
Symmetry VERY GOOD
Fluorescence NONE
Inscription(s) LG643432347

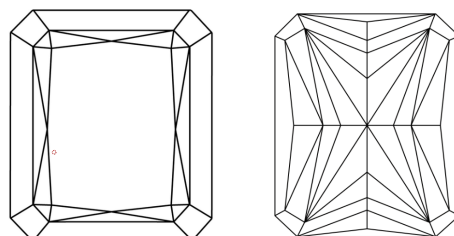
Comments: This Laboratory Grown Diamond was created by Chemical Vapor Deposition (CVD) growth process.

PROPORTIONS



Sample Image Used

CLARITY CHARACTERISTICS



KEY TO SYMBOLS

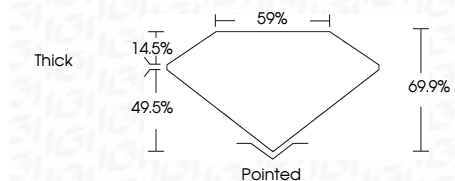
Red symbols indicate internal characteristics.
Green symbols indicate external characteristics.

COLOR

D E F G H I J Faint Very Light Light

CLARITY

IF VVS 1-2 VS 1-2 SI 1-2 I 1-3
Internally Flawless Very Very Slightly Included Very Slightly Included Slightly Included Included



ADDITIONAL GRADING INFORMATION

Polish EXCELLENT
Symmetry VERY GOOD
Fluorescence NONE
Inscription(s) LG643432347
Comments: This Laboratory Grown Diamond was created by Chemical Vapor Deposition (CVD) growth process.



IGI



July 18, 2024
IGI Report No LG643432347
CUT CORNERED RECT. MODIFIED BRILLIANT
6.74 X 4.82 X 3.37 MM
1.03 CARAT
FANCY INTENSE YELLOW
VVS 2
69.9%
59%
Thick
Pointed
EXCELLENT
VERY GOOD
NONE
Inscription(s) LG643432347

Comments: This Laboratory Grown Diamond was created by Chemical Vapor Deposition (CVD) growth process.