



ELECTRONIC COPY

LG643433169
Report verification at igi.org



July 15, 2024
IGI Report Number: LG643433169
Description: LABORATORY GROWN DIAMOND
Shape and Cutting Style: ROUND BRILLIANT
Measurements: 6.53 - 6.56 X 3.96 MM
GRADING RESULTS
Carat Weight: 1.05 CARAT
Color Grade: E
Clarity Grade: VVS 1
Cut Grade: IDEAL

LABORATORY GROWN DIAMOND REPORT

July 15, 2024
IGI Report Number: LG643433169
Description: LABORATORY GROWN DIAMOND
Shape and Cutting Style: ROUND BRILLIANT
Measurements: 6.53 - 6.56 X 3.96 MM

GRADING RESULTS

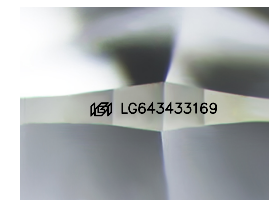
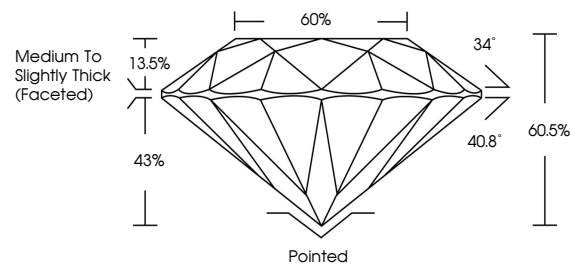
Carat Weight: 1.05 CARAT
Color Grade: E
Clarity Grade: VVS 1
Cut Grade: IDEAL

ADDITIONAL GRADING INFORMATION

Polish: EXCELLENT
Symmetry: EXCELLENT
Fluorescence: NONE
Inscription(s): IGI LG643433169

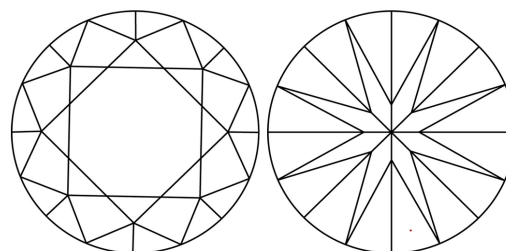
Comments: As Grown - No indication of post-growth treatment. This Laboratory Grown Diamond was created by High Pressure High Temperature (HPHT) growth process. Type II

PROPORTIONS



Sample Image Used

CLARITY CHARACTERISTICS



KEY TO SYMBOLS

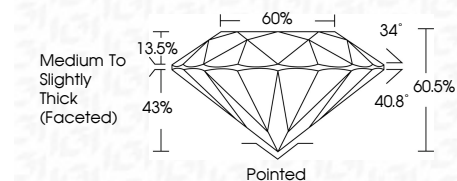
Red symbols indicate internal characteristics. Green symbols indicate external characteristics.

COLOR

D E F G H I J Faint Very Light Light

CLARITY

IF VVS 1-2 VS 1-2 SI 1-2 I 1-3
Internally Flawless Very Very Slightly Included Very Slightly Included Slightly Included Included



ADDITIONAL GRADING INFORMATION

Polish: EXCELLENT
Symmetry: EXCELLENT
Fluorescence: NONE
Inscription(s): IGI LG643433169
Comments: As Grown - No indication of post-growth treatment. This Laboratory Grown Diamond was created by High Pressure High Temperature (HPHT) growth process. Type II



July 15, 2024
IGI Report No. LG643433169
ROUND BRILLIANT
6.53 - 6.56 X 3.96 MM
1.05 CARAT
E
VVS 1
IDEAL
60.5%
60%
Medium To Slightly Thick (Faceted)
Pointed
EXCELLENT
EXCELLENT
NONE
IGI LG643433169
Comments: As Grown - No indication of post-growth treatment. This Laboratory Grown Diamond was created by High Pressure High Temperature (HPHT) growth process. Type II