



**ELECTRONIC COPY**

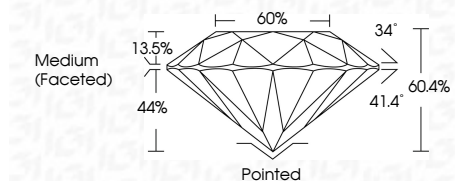
LG643436722  
Report verification at igi.org



July 15, 2024  
IGI Report Number **LG643436722**  
Description **LABORATORY GROWN DIAMOND**  
Shape and Cutting Style **ROUND BRILLIANT**  
Measurements **7.55 - 7.59 X 4.57 MM**

**GRADING RESULTS**

Carat Weight **1.59 CARAT**  
Color Grade **E**  
Clarity Grade **VS 1**  
Cut Grade **IDEAL**

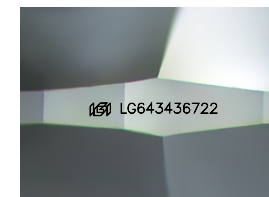


**ADDITIONAL GRADING INFORMATION**

Polish **EXCELLENT**  
Symmetry **EXCELLENT**  
Fluorescence **NONE**  
Inscription(s) **IGI LG643436722**  
Comments: This Laboratory Grown Diamond was created by Chemical Vapor Deposition (CVD) growth process. Type IIa

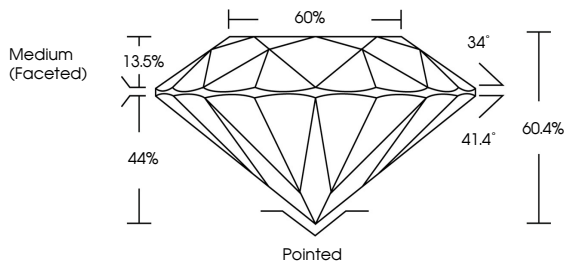


July 15, 2024  
IGI Report No LG643436722  
**ROUND BRILLIANT**  
7.55 - 7.59 X 4.57 MM  
1.59 CARAT  
Color Grade **E**  
Clarity Grade **VS 1**  
Depth **60.4%**  
Table **60%**  
Medium (Faceted)  
Culet **Pointed**  
Polish **EXCELLENT**  
Symmetry **EXCELLENT**  
Fluorescence **NONE**  
Inscriptions(s) **IGI LG643436722**  
Comments: This Laboratory Grown Diamond was created by Chemical Vapor Deposition (CVD) growth process. Type IIa

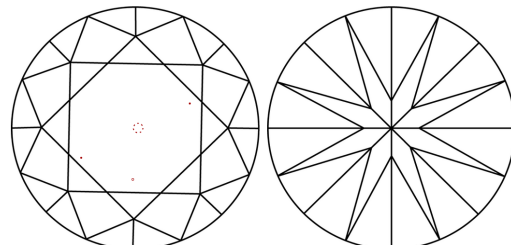


Sample Image Used

**PROPORTIONS**



**CLARITY CHARACTERISTICS**



**KEY TO SYMBOLS**

Red symbols indicate internal characteristics.  
Green symbols indicate external characteristics.

**COLOR**

D E F G H I J Faint Very Light Light

**CLARITY**

IF	VS <sup>1-2</sup>	VS <sup>1-2</sup>	SI <sup>1-2</sup>	I <sup>1-3</sup>
Internally Flawless	Very Very Slightly Included	Very Slightly Included	Slightly Included	Included

