



ELECTRONIC COPY

LG643437512
Report verification at igi.org



July 16, 2024
IGI Report Number LG643437512
Description LABORATORY GROWN DIAMOND
Shape and Cutting Style ROUND BRILLIANT
Measurements 11.00 - 11.06 X 6.66 MM
GRADING RESULTS
Carat Weight 5.04 CARATS
Color Grade E
Clarity Grade VS 2
Cut Grade IDEAL

July 16, 2024
IGI Report Number LG643437512
Description LABORATORY GROWN DIAMOND
Shape and Cutting Style ROUND BRILLIANT
Measurements 11.00 - 11.06 X 6.66 MM

GRADING RESULTS

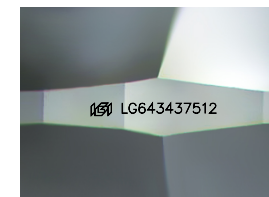
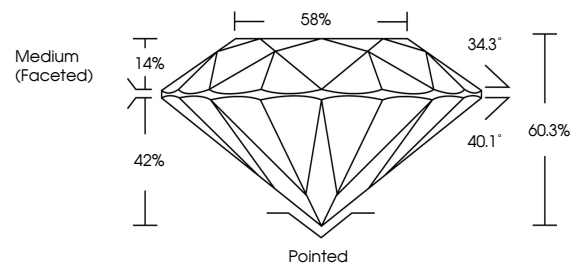
Carat Weight 5.04 CARATS
Color Grade E
Clarity Grade VS 2
Cut Grade IDEAL

ADDITIONAL GRADING INFORMATION

Polish EXCELLENT
Symmetry EXCELLENT
Fluorescence NONE
Inscription(s) IGI LG643437512

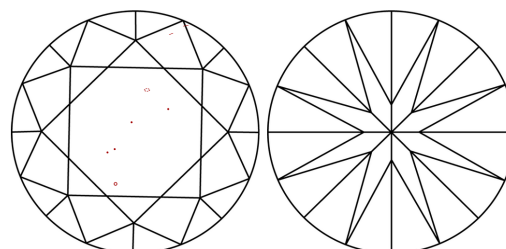
Comments: This Laboratory Grown Diamond was created by Chemical Vapor Deposition (CVD) growth process. Type IIa

PROPORTIONS



Sample Image Used

CLARITY CHARACTERISTICS



KEY TO SYMBOLS

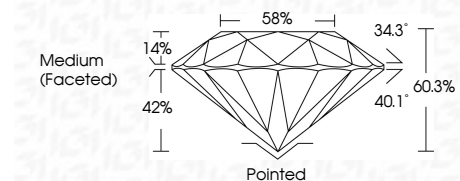
Red symbols indicate internal characteristics.
Green symbols indicate external characteristics.

COLOR

D E F G H I J Faint Very Light Light

CLARITY

IF VS 1-2 VS 1-2 SI 1-2 I 1-3
Internally Flawless Very Very Slightly Included Very Slightly Included Slightly Included Included



ADDITIONAL GRADING INFORMATION

Polish EXCELLENT
Symmetry EXCELLENT
Fluorescence NONE
Inscription(s) IGI LG643437512
Comments: This Laboratory Grown Diamond was created by Chemical Vapor Deposition (CVD) growth process. Type IIa



IGI



July 16, 2024
IGI Report No LG643437512
ROUND BRILLIANT
11.00 - 11.06 X 6.66 MM
5.04 CARATS E
Color Grade VS 2
Clarity Grade IDEAL
Depth 60.3%
Table 58%
Medium (Faceted)
Cutler Pointed
Polish EXCELLENT
Symmetry EXCELLENT
Fluorescence NONE
Inscriptions(s) IGI LG643437512
Comments: This Laboratory Grown Diamond was created by Chemical Vapor Deposition (CVD) growth process. Type IIa