



ELECTRONIC COPY

LG643439480
Report verification at igi.org



July 24, 2024
IGI Report Number **LG643439480**
Description **LABORATORY GROWN DIAMOND**
Shape and Cutting Style **PRINCESS CUT**
Measurements **7.90 X 7.82 X 5.55 MM**
GRADING RESULTS
Carat Weight **3.01 CARATS**
Color Grade **FANCY VIVID GREEN**
Clarity Grade **VVS 2**

LABORATORY GROWN DIAMOND REPORT

July 24, 2024
IGI Report Number **LG643439480**
Description **LABORATORY GROWN DIAMOND**
Shape and Cutting Style **PRINCESS CUT**
Measurements **7.90 X 7.82 X 5.55 MM**

GRADING RESULTS

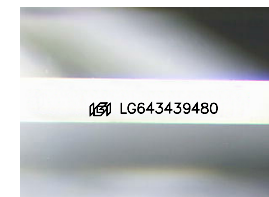
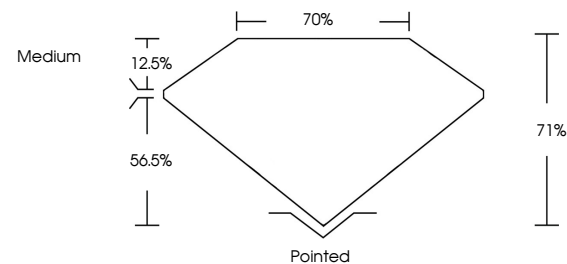
Carat Weight **3.01 CARATS**
Color Grade **FANCY VIVID GREEN**
Clarity Grade **VVS 2**

ADDITIONAL GRADING INFORMATION

Polish **EXCELLENT**
Symmetry **EXCELLENT**
Fluorescence **VERY SLIGHT**
Inscription(s) **IGI LG643439480**

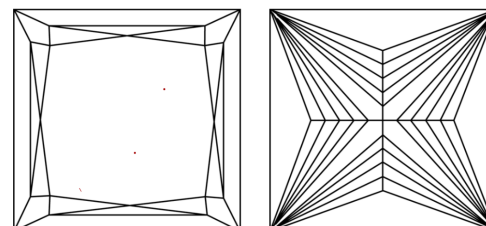
Comments: This Laboratory Grown Diamond was created by Chemical Vapor Deposition (CVD) growth process.
Indications of post-growth treatment.

PROPORTIONS



Sample Image Used

CLARITY CHARACTERISTICS



KEY TO SYMBOLS

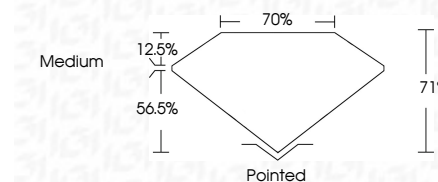
Red symbols indicate internal characteristics.
Green symbols indicate external characteristics.

COLOR

D E F G H I J Faint Very Light Light

CLARITY

IF	VS ¹⁻²	VS ¹⁻²	SI ¹⁻²	I ¹⁻³
Internally Flawless	Very Very Slightly Included	Very Slightly Included	Slightly Included	Included



ADDITIONAL GRADING INFORMATION

Polish **EXCELLENT**
Symmetry **EXCELLENT**
Fluorescence **VERY SLIGHT**
Inscription(s) **IGI LG643439480**

Comments: This Laboratory Grown Diamond was created by Chemical Vapor Deposition (CVD) growth process.
Indications of post-growth treatment.



IGI



July 24, 2024
IGI Report No **LG643439480**
PRINCESS CUT
3.01 CARATS
Carat Weight **FANCY VIVID GREEN**
Color Grade **VVS 2**
Depth **71%**
Table **70%**
Girdle **Medium**
Culet **Pointed**
Polish **EXCELLENT**
Symmetry **EXCELLENT**
Fluorescence **VERY SLIGHT**
Inscription(s) **IGI LG643439480**

Comments: This Laboratory Grown Diamond was created by Chemical Vapor Deposition (CVD) growth process.
Indications of post-growth treatment.