



ELECTRONIC COPY

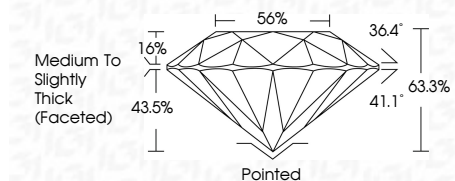
LG643444145
Report verification at igi.org



July 15, 2024
IGI Report Number **LG643444145**
Description **LABORATORY GROWN DIAMOND**
Shape and Cutting Style **ROUND BRILLIANT**
Measurements **6.41 - 6.46 X 4.07 MM**

GRADING RESULTS

Carat Weight **1.04 CARAT**
Color Grade **H**
Clarity Grade **VVS 2**
Cut Grade **EXCELLENT**

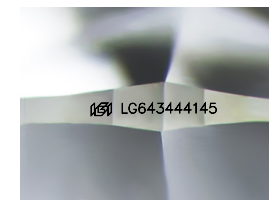


ADDITIONAL GRADING INFORMATION

Polish **EXCELLENT**
Symmetry **EXCELLENT**
Fluorescence **NONE**
Inscription(s) **IGI LG643444145**
Comments: This Laboratory Grown Diamond was created by Chemical Vapor Deposition (CVD) growth process. Type IIa

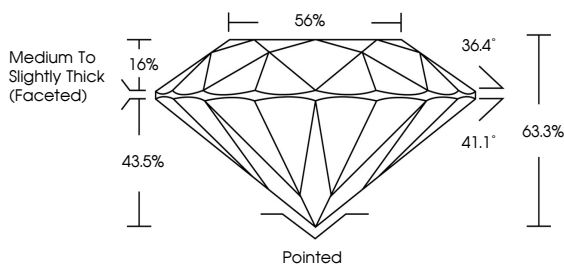


July 15, 2024
IGI Report No **LG643444145**
ROUND BRILLIANT
6.41 - 6.46 X 4.07 MM
1.04 CARAT **H**
Carat Weight
Color Grade **EXCELLENT**
Clarity Grade **VVS 2**
Depth **63.3%**
Table **16%**
Girdle **Medium To Slightly Thick (Faceted)**
Crown Angle **36.4°**
Pavilion Angle **41.1°**
Polish **EXCELLENT**
Symmetry **EXCELLENT**
Fluorescence **NONE**
Inscription(s) **IGI LG643444145**
Comments: This Laboratory Grown Diamond was created by Chemical Vapor Deposition (CVD) growth process. Type IIa

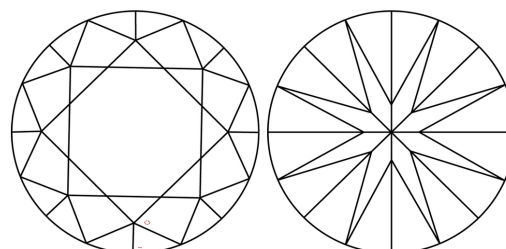


Sample Image Used

PROPORTIONS



CLARITY CHARACTERISTICS



KEY TO SYMBOLS

Red symbols indicate internal characteristics.
Green symbols indicate external characteristics.

COLOR

D E F G H I J Faint Very Light Light

CLARITY

IF	VS ¹⁻²	VS ¹⁻²	SI ¹⁻²	I ¹⁻³
Internally Flawless	Very Very Slightly Included	Very Slightly Included	Slightly Included	Included

