



ELECTRONIC COPY

LG643449083
Report verification at igi.org



July 16, 2024

IGI Report Number **LG643449083**

Description **LABORATORY GROWN DIAMOND**

Shape and Cutting Style **CUT CORNERED
RECTANGULAR MODIFIED
BRILLIANT**

Measurements **7.71 X 5.30 X 3.60 MM**

GRADING RESULTS

Carat Weight **1.29 CARAT**

Color Grade **E**

Clarity Grade **VS 1**

LABORATORY GROWN DIAMOND REPORT

July 16, 2024

IGI Report Number **LG643449083**

Description **LABORATORY GROWN DIAMOND**

Shape and Cutting Style **CUT CORNERED RECTANGULAR
MODIFIED BRILLIANT**

Measurements **7.71 X 5.30 X 3.60 MM**

GRADING RESULTS

Carat Weight **1.29 CARAT**

Color Grade **E**

Clarity Grade **VS 1**

ADDITIONAL GRADING INFORMATION

Polish **EXCELLENT**

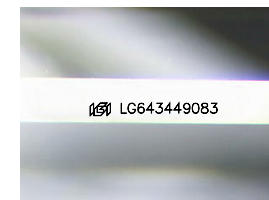
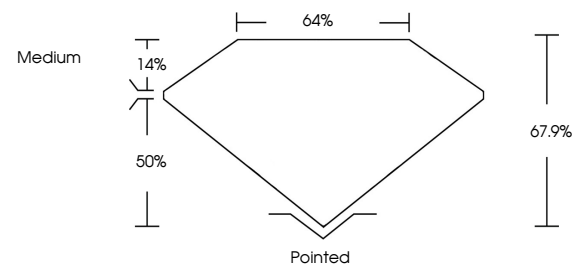
Symmetry **EXCELLENT**

Fluorescence **NONE**

Inscription(s) **IGI LG643449083**

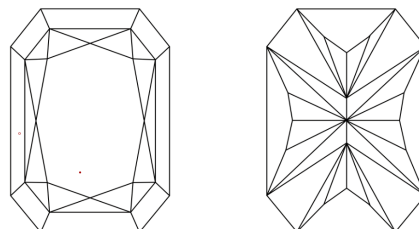
Comments: This Laboratory Grown Diamond was created by Chemical Vapor Deposition (CVD) growth process. Type IIa

PROPORTIONS



Sample Image Used

CLARITY CHARACTERISTICS



KEY TO SYMBOLS

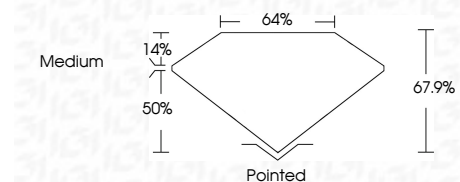
Red symbols indicate internal characteristics.
Green symbols indicate external characteristics.

COLOR

D E F G H I J Faint Very Light Light

CLARITY

IF	VS ¹⁻²	VS ¹⁻²	SI ¹⁻²	I ¹⁻³
Internally Flawless	Very Very Slightly Included	Very Slightly Included	Slightly Included	Included



ADDITIONAL GRADING INFORMATION

Polish **EXCELLENT**

Symmetry **EXCELLENT**

Fluorescence **NONE**

Inscription(s) **IGI LG643449083**

Comments: This Laboratory Grown Diamond was created by Chemical Vapor Deposition (CVD) growth process. Type IIa



IGI



July 16, 2024
IGI Report No. LG643449083
CUT CORNERED RECT. MODIFIED BRILLIANT
7.71 X 5.30 X 3.60 MM
Carat Weight 1.29 CARAT
Color Grade E
Clarity Grade VS 1
Depth 67.9%
Table 14%
Girdle 64%
Medium
Pointed
Polish EXCELLENT
Symmetry EXCELLENT
Fluorescence NONE
Inscription(s) IGI LG643449083

Comments: This Laboratory Grown Diamond was created by Chemical Vapor Deposition (CVD) growth process. Type IIa