



**ELECTRONIC COPY**

LG643449391  
Report verification at igi.org



July 22, 2024  
IGI Report Number **LG643449391**  
Description **LABORATORY GROWN DIAMOND**  
Shape and Cutting Style **CUSHION MODIFIED BRILLIANT**  
Measurements **15.61 X 11.02 X 7.56 MM**  
**GRADING RESULTS**  
Carat Weight **10.10 CARATS**  
Color Grade **G**  
Clarity Grade **VS 2**

**LABORATORY GROWN DIAMOND REPORT**

July 22, 2024  
IGI Report Number **LG643449391**  
Description **LABORATORY GROWN DIAMOND**  
Shape and Cutting Style **CUSHION MODIFIED BRILLIANT**  
Measurements **15.61 X 11.02 X 7.56 MM**

**GRADING RESULTS**

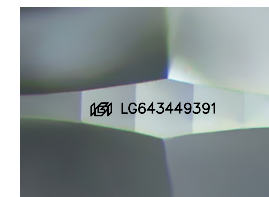
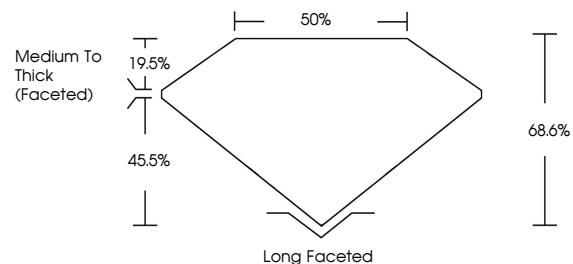
Carat Weight **10.10 CARATS**  
Color Grade **G**  
Clarity Grade **VS 2**

**ADDITIONAL GRADING INFORMATION**

Polish **EXCELLENT**  
Symmetry **EXCELLENT**  
Fluorescence **NONE**  
Inscription(s) **LG643449391**

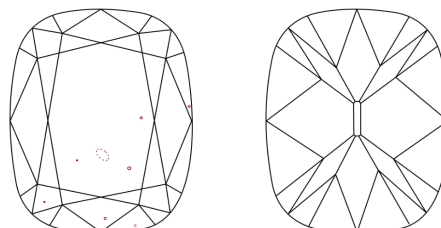
Comments: This Laboratory Grown Diamond was created by Chemical Vapor Deposition (CVD) growth process. Type IIa

**PROPORTIONS**



Sample Image Used

**CLARITY CHARACTERISTICS**



**KEY TO SYMBOLS**

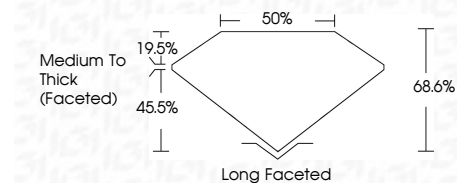
Red symbols indicate internal characteristics.  
Green symbols indicate external characteristics.

**COLOR**

D E F G H I J Faint Very Light Light

**CLARITY**

IF	VS <sup>1-2</sup>	VS <sup>1-2</sup>	SI <sup>1-2</sup>	I <sup>1-3</sup>
Internally Flawless	Very Very Slightly Included	Very Slightly Included	Slightly Included	Included



**ADDITIONAL GRADING INFORMATION**

Polish **EXCELLENT**  
Symmetry **EXCELLENT**  
Fluorescence **NONE**  
Inscription(s) **LG643449391**  
Comments: This Laboratory Grown Diamond was created by Chemical Vapor Deposition (CVD) growth process. Type IIa



**IGI**



July 22, 2024  
IGI Report No **LG643449391**  
**CUSHION MODIFIED BRILLIANT**  
**15.61 X 11.02 X 7.56 MM**  
Carat Weight **10.10 CARATS**  
Color Grade **G**  
Clarity Grade **VS 2**  
Depth **68.6%**  
Table **50%**  
Girdle **Medium To Thick (Faceted)**  
Culet **Long Faceted**  
Polish **EXCELLENT**  
Symmetry **EXCELLENT**  
Fluorescence **NONE**  
Inscription(s) **LG643449391**

Comments: This Laboratory Grown Diamond was created by Chemical Vapor Deposition (CVD) growth process. Type IIa