



ELECTRONIC COPY

LG643449872
Report verification at igi.org



July 15, 2024

IGI Report Number **LG643449872**

Description **LABORATORY GROWN DIAMOND**

Shape and Cutting Style **ROUND BRILLIANT**

Measurements **8.08 - 8.05 X 5.00 MM**

GRADING RESULTS

Carat Weight **2.02 CARATS**

Color Grade **G**

Clarity Grade **VS 1**

Cut Grade **IDEAL**

July 15, 2024

IGI Report Number **LG643449872**

Description **LABORATORY GROWN DIAMOND**

Shape and Cutting Style **ROUND BRILLIANT**

Measurements **8.08 - 8.05 X 5.00 MM**

GRADING RESULTS

Carat Weight **2.02 CARATS**

Color Grade **G**

Clarity Grade **VS 1**

Cut Grade **IDEAL**

ADDITIONAL GRADING INFORMATION

Polish **EXCELLENT**

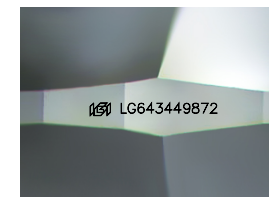
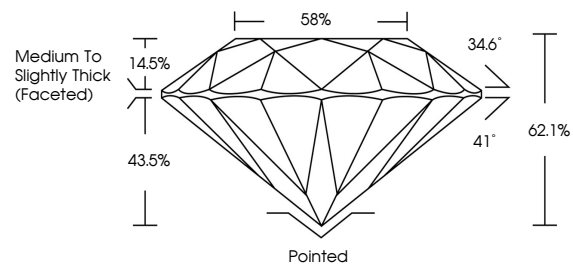
Symmetry **EXCELLENT**

Fluorescence **NONE**

Inscription(s) **IGI LG643449872**

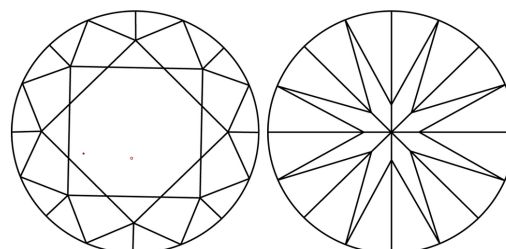
Comments: This Laboratory Grown Diamond was created by Chemical Vapor Deposition (CVD) growth process.
Type IIa

PROPORTIONS



Sample Image Used

CLARITY CHARACTERISTICS



KEY TO SYMBOLS

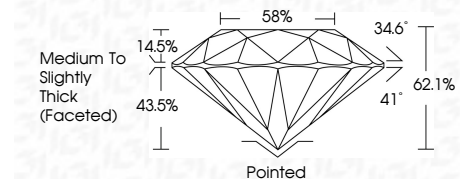
Red symbols indicate internal characteristics.
Green symbols indicate external characteristics.

COLOR

D E F G H I J Faint Very Light Light

CLARITY

IF	VS ¹⁻²	VS ¹⁻²	SI ¹⁻²	I ¹⁻³
Internally Flawless	Very Very Slightly Included	Very Slightly Included	Slightly Included	Included



ADDITIONAL GRADING INFORMATION

Polish **EXCELLENT**

Symmetry **EXCELLENT**

Fluorescence **NONE**

Inscription(s) **IGI LG643449872**

Comments: This Laboratory Grown Diamond was created by Chemical Vapor Deposition (CVD) growth process.
Type IIa



IGI



July 15, 2024
IGI Report No. LG643449872
ROUND BRILLIANT

2.02 CARATS
G

8.08 - 8.05 X 5.00 MM

Color Grade VS 1
Clarity Grade IDEAL
Depth 62.1%
Table 14.5%
Girdle 58%
Medium To Slightly Thick (Faceted)

Culet Pointed
Polish EXCELLENT
Symmetry EXCELLENT
Fluorescence NONE
Inscriptions(s) IGI LG643449872

Comments: This Laboratory Grown Diamond was created by Chemical Vapor Deposition (CVD) growth process.
Type IIa