



ELECTRONIC COPY

LABORATORY GROWN DIAMOND REPORT

July 16, 2024	
IGI Report Number	LG643449940
Description	LABORATORY GROWN DIAMOND
Shape and Cutting Style	CUT CORNERED RECTANGULAR MODIFIED BRILLIANT
Measurements	9.52 X 6.55 X 4.43 MM

GRADING RESULTS

Carat Weight	2.38 CARATS
Color Grade	H
Clarity Grade	VVS 2

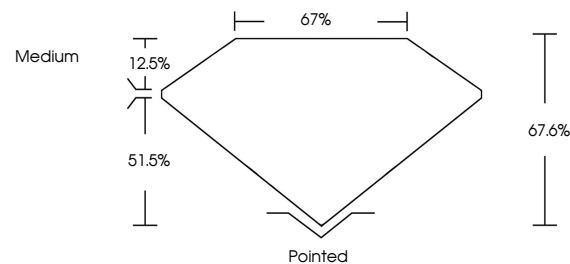
ADDITIONAL GRADING INFORMATION

Polish	EXCELLENT
Symmetry	EXCELLENT
Fluorescence	NONE
Inscription(s)	 LG643449940

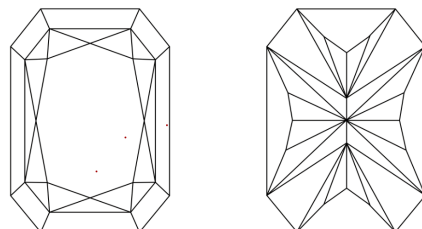
Comments: This Laboratory Grown Diamond was created by Chemical Vapor Deposition (CVD) growth process.
Type IIa

LG643449940
Report verification at igi.org

PROPORTIONS

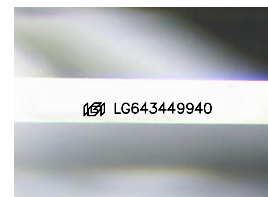


CLARITY CHARACTERISTICS



KEY TO SYMBOLS

Red symbols indicate internal characteristics.
Green symbols indicate external characteristics.



Sample Image Used

COLOR

D E F G H I J Faint Very Light Light

CLARITY

IF	VVS ¹⁻²	VS ¹⁻²	SI ¹⁻²	I ¹⁻³
Internally Flawless	Very Very Slightly Included	Very Slightly Included	Slightly Included	Included



© IGI 2020, International Gemological Institute

FD - 10 20

www.igi.org

LABORATORY GROWN DIAMOND REPORT



July 16, 2024

IGI Report Number **LG643449940**

Description	LABORATORY GROWN DIAMOND
-------------	--------------------------

Shape and Cutting Style

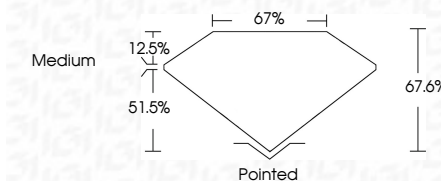
CUT CORNERED
RECTANGULAR MODIFIED
BRILLIANT

Measurements **9.52 X 6.55 X 4.43 MM**

GRADING RESULTS

Carat Weight **2.38 CARATS**

Color Grade	H
-------------	---

Clarity Grade VVS 2

ADDITIONAL GRADING INFORMATION

Polish **EXCELLENCE**Symmetry **EXCELLEN**Fluorescence NONIInscription(s) LG64344994

Comments: This Laboratory Grown Diamond was created by Chemical Vapor Deposition (CVD) growth process.
Type IIa



July 16, 2024	GI CORNERED RECT. MODIFIED BRILLIANT
2.38 CARATS	H
Color Grade	VVS 2
Clarity Grade	67.6%
Depth	67%
Table	Medium
Girdle	
Culet	Pointed
Pole	EXCELLENT
Symmetry	EXCELLENT
Fluorescence	NONE
Inscriptions(s)	IGI LG54949940

Comments: Laboratory Grown Diamond was created by Chemical Vapor Deposition (CVD) growth process.

Type IIA