



ELECTRONIC COPY

LG643450605 Report verification at igi.org

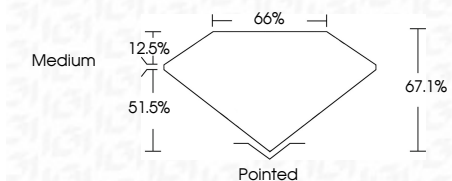


July 17, 2024 IGI Report Number LG643450605 Description LABORATORY GROWN DIAMOND Shape and Cutting Style CUT CORNERED RECTANGULAR MODIFIED BRILLIANT

Measurements 9.66 X 6.69 X 4.49 MM

GRADING RESULTS

Carat Weight 2.51 CARATS Color Grade F Clarity Grade VVS 2



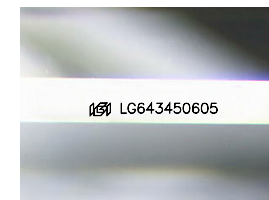
ADDITIONAL GRADING INFORMATION

Polish EXCELLENT Symmetry EXCELLENT Fluorescence NONE Inscription(s) LG643450605 Comments: This Laboratory Grown Diamond was created by Chemical Vapor Deposition (CVD) growth process. Type IIa



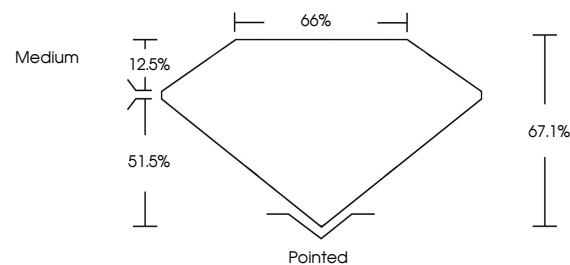
July 17, 2024 IGI Report No LG643450605 CUT CORNERED RECT. MODIFIED BRILLIANT 9.66 X 6.69 X 4.49 MM 2.51 CARATS F VVS 2 67.1% 66% Medium Pointed EXCELLENT EXCELLENT NONE NONE LG643450605

Comments: This Laboratory Grown Diamond was created by Chemical Vapor Deposition (CVD) growth process. Type IIa

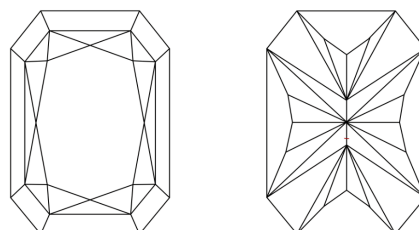


Sample Image Used

PROPORTIONS



CLARITY CHARACTERISTICS



KEY TO SYMBOLS

Red symbols indicate internal characteristics. Green symbols indicate external characteristics.

COLOR

D E F G H I J Faint Very Light Light

CLARITY

IF VVS 1-2 VS 1-2 SI 1-2 I 1-3 Internally Flawless Very Very Slightly Included Very Slightly Included Slightly Included Included

