



ELECTRONIC COPY

LG643451130
Report verification at igi.org



July 22, 2024

IGI Report Number **LG643451130**

Description **LABORATORY GROWN DIAMOND**

Shape and Cutting Style **EMERALD CUT**

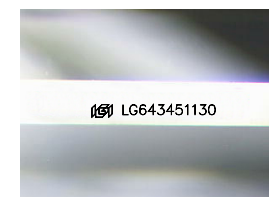
Measurements **9.88 X 6.85 X 4.57 MM**

GRADING RESULTS

Carat Weight **3.01 CARATS**

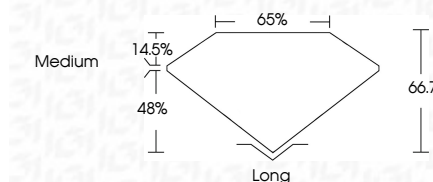
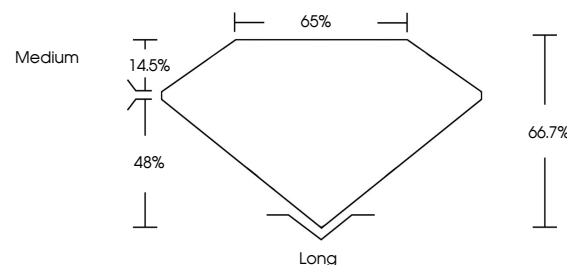
Color Grade **G**

Clarity Grade **VS 2**



Sample Image Used

PROPORTIONS



ADDITIONAL GRADING INFORMATION

Polish **EXCELLENT**

Symmetry **EXCELLENT**

Fluorescence **NONE**

Inscription(s) **IGI LG643451130**

Comments: This Laboratory Grown Diamond was created by Chemical Vapor Deposition (CVD) growth process.
Type IIa



COLOR

| | | | | | | | | | |
|---|---|---|---|---|---|---|-------|------------|-------|
| D | E | F | G | H | I | J | Faint | Very Light | Light |
|---|---|---|---|---|---|---|-------|------------|-------|

CLARITY

| | | | | |
|---------------------|-----------------------------|------------------------|-------------------|------------------|
| IF | VS ¹⁻² | VS ¹⁻² | SI ¹⁻² | I ¹⁻³ |
| Internally Flawless | Very Very Slightly Included | Very Slightly Included | Slightly Included | Included |



July 22, 2024
IGI Report No LG643451130
EMERALD CUT

9.88 X 6.85 X 4.57 MM
3.01 CARATS
Color Grade G
Clarity Grade VS 2
Depth 66.7%
Table 65%
Girdle Medium
Culet Long
Polish EXCELLENT
Symmetry EXCELLENT
Fluorescence NONE
Inscription(s) IGI LG643451130

Comments: This Laboratory Grown Diamond was created by Chemical Vapor Deposition (CVD) growth process.
Type IIa