



ELECTRONIC COPY

LG643451446
Report verification at igi.org



July 16, 2024
IGI Report Number: LG643451446
Description: LABORATORY GROWN DIAMOND
Shape and Cutting Style: ROUND BRILLIANT
Measurements: 11.13 - 11.16 X 6.65 MM
GRADING RESULTS
Carat Weight: 5.02 CARATS
Color Grade: F
Clarity Grade: VVS 2
Cut Grade: IDEAL

July 16, 2024
IGI Report Number: LG643451446
Description: LABORATORY GROWN DIAMOND
Shape and Cutting Style: ROUND BRILLIANT
Measurements: 11.13 - 11.16 X 6.65 MM

GRADING RESULTS

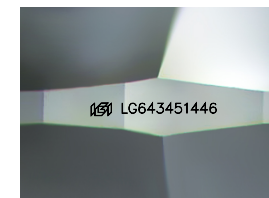
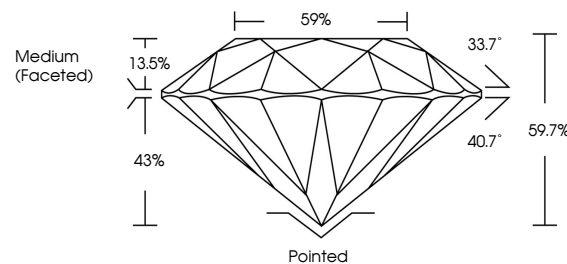
Carat Weight: 5.02 CARATS
Color Grade: F
Clarity Grade: VVS 2
Cut Grade: IDEAL

ADDITIONAL GRADING INFORMATION

Polish: EXCELLENT
Symmetry: EXCELLENT
Fluorescence: NONE
Inscription(s): IGI LG643451446

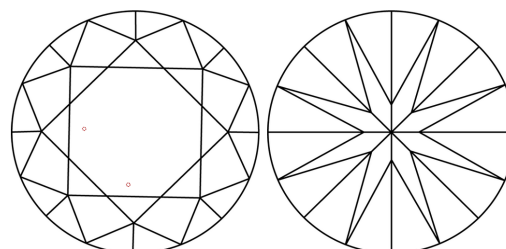
Comments: This Laboratory Grown Diamond was created by Chemical Vapor Deposition (CVD) growth process. Type IIa

PROPORTIONS



Sample Image Used

CLARITY CHARACTERISTICS



KEY TO SYMBOLS

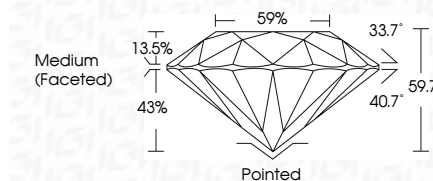
Red symbols indicate internal characteristics.
Green symbols indicate external characteristics.

COLOR

D E F G H I J Faint Very Light Light

CLARITY

IF VVS 1-2 VS 1-2 SI 1-2 I 1-3
Internally Flawless Very Very Slightly Included Very Slightly Included Slightly Included Included



ADDITIONAL GRADING INFORMATION

Polish: EXCELLENT
Symmetry: EXCELLENT
Fluorescence: NONE
Inscription(s): IGI LG643451446
Comments: This Laboratory Grown Diamond was created by Chemical Vapor Deposition (CVD) growth process. Type IIa



Summary table with fields: July 16, 2024, IGI Report No. LG643451446, ROUND BRILLIANT, 11.13 - 11.16 X 6.65 MM, 5.02 CARATS, F, VVS 2, IDEAL, 59.7%, Medium (Faceted), Pointed, EXCELLENT, EXCELLENT, NONE, IGI LG643451446. Comments: This Laboratory Grown Diamond was created by Chemical Vapor Deposition (CVD) growth process. Type IIa