



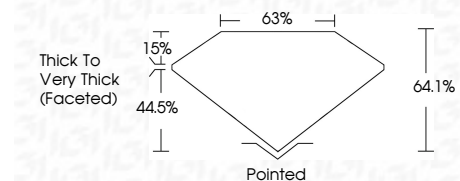
ELECTRONIC COPY

LG643452147 Report verification at igi.org



July 15, 2024 IGI Report Number LG643452147 Description LABORATORY GROWN DIAMOND Shape and Cutting Style SQUARE CUSHION BRILLIANT Measurements 9.06 X 8.86 X 5.68 MM

GRADING RESULTS Carat Weight 4.23 CARATS Color Grade E Clarity Grade VS 1

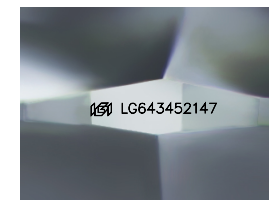


ADDITIONAL GRADING INFORMATION Polish EXCELLENT Symmetry EXCELLENT Fluorescence NONE Inscription(s) LG643452147 Comments: This Laboratory Grown Diamond was created by Chemical Vapor Deposition (CVD) growth process. Type IIa



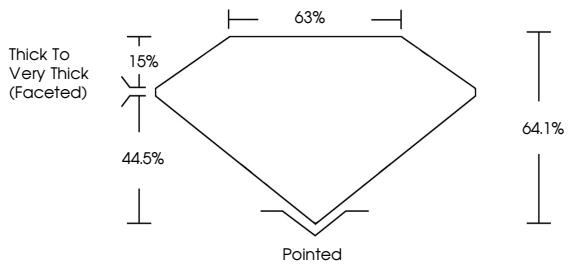
July 15, 2024 IGI Report No LG643452147 SQUARE CUSHION BRILLIANT 9.06 X 8.86 X 5.68 MM 4.23 CARATS E VS 1 64.1% 63% Thick to Very Thick (Faceted) Pointed EXCELLENT EXCELLENT NONE NONE LG643452147

Comments: This Laboratory Grown Diamond was created by Chemical Vapor Deposition (CVD) growth process. Type IIa

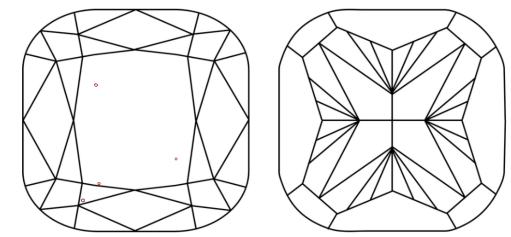


Sample Image Used

PROPORTIONS



CLARITY CHARACTERISTICS



KEY TO SYMBOLS Red symbols indicate internal characteristics. Green symbols indicate external characteristics.

COLOR

Table with color categories: D, E, F, G, H, I, J, Faint, Very Light, Light

CLARITY

Table with clarity categories: IF, VS 1-2, VS 1-2, SI 1-2, I 1-3, Internally Flawless, Very Very Slightly Included, Very Slightly Included, Slightly Included, Included



July 15, 2024 IGI Report Number LG643452147 Description LABORATORY GROWN DIAMOND Shape and Cutting Style SQUARE CUSHION BRILLIANT Measurements 9.06 X 8.86 X 5.68 MM GRADING RESULTS Carat Weight 4.23 CARATS Color Grade E Clarity Grade VS 1 ADDITIONAL GRADING INFORMATION Polish EXCELLENT Symmetry EXCELLENT Fluorescence NONE Inscription(s) LG643452147

Comments: This Laboratory Grown Diamond was created by Chemical Vapor Deposition (CVD) growth process. Type IIa