



ELECTRONIC COPY

LG643453659
Report verification at igi.org



July 16, 2024
IGI Report Number LG643453659
Description LABORATORY GROWN DIAMOND
Shape and Cutting Style CUT CORNERED RECTANGULAR MODIFIED BRILLIANT
Measurements 9.17 X 6.22 X 4.21 MM
GRADING RESULTS
Carat Weight 2.04 CARATS
Color Grade E
Clarity Grade VS 1

LABORATORY GROWN DIAMOND REPORT

July 16, 2024
IGI Report Number LG643453659
Description LABORATORY GROWN DIAMOND
Shape and Cutting Style CUT CORNERED RECTANGULAR MODIFIED BRILLIANT
Measurements 9.17 X 6.22 X 4.21 MM

GRADING RESULTS

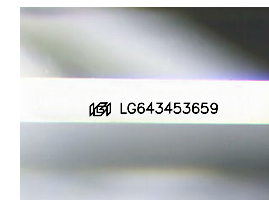
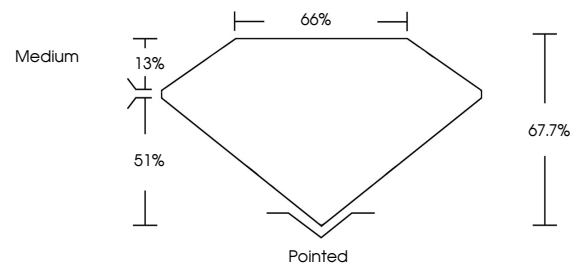
Carat Weight 2.04 CARATS
Color Grade E
Clarity Grade VS 1

ADDITIONAL GRADING INFORMATION

Polish EXCELLENT
Symmetry EXCELLENT
Fluorescence NONE
Inscription(s) LG643453659

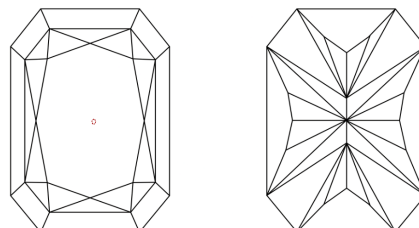
Comments: This Laboratory Grown Diamond was created by Chemical Vapor Deposition (CVD) growth process. Type IIa

PROPORTIONS



Sample Image Used

CLARITY CHARACTERISTICS



KEY TO SYMBOLS

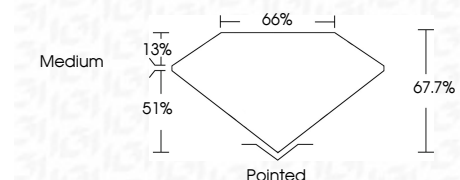
Red symbols indicate internal characteristics.
Green symbols indicate external characteristics.

COLOR

D E F G H I J Faint Very Light Light

CLARITY

Table with 5 columns: IF, VS 1-2, VS 1-2, SI 1-2, I 1-3. Rows: Internally Flawless, Very Very Slightly Included, Very Slightly Included, Slightly Included, Included.



ADDITIONAL GRADING INFORMATION

Polish EXCELLENT
Symmetry EXCELLENT
Fluorescence NONE
Inscription(s) LG643453659
Comments: This Laboratory Grown Diamond was created by Chemical Vapor Deposition (CVD) growth process. Type IIa



July 16, 2024
IGI Report No LG643453659
CUT CORNERED RECT. MODIFIED BRILLIANT
9.17 X 6.22 X 4.21 MM
2.04 CARATS E
Color Grade E
Clarity Grade VS 1
Depth 67.7%
Table 65%
Girdle Medium
Culet Pointed
Polish EXCELLENT
Symmetry EXCELLENT
Fluorescence NONE
Inscription(s) LG643453659
Comments: This Laboratory Grown Diamond was created by Chemical Vapor Deposition (CVD) growth process. Type IIa