



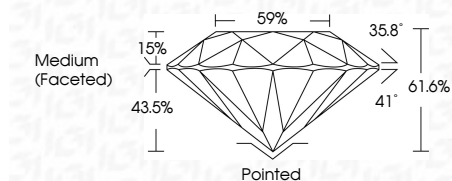
ELECTRONIC COPY

LG644404761 Report verification at igi.org



July 19, 2024 IGI Report Number LG644404761 Description LABORATORY GROWN DIAMOND Shape and Cutting Style ROUND BRILLIANT Measurements 7.88 - 7.97 X 4.88 MM

GRADING RESULTS Carat Weight 1.90 CARAT Color Grade D Clarity Grade VS 1 Cut Grade IDEAL



ADDITIONAL GRADING INFORMATION Polish EXCELLENT Symmetry EXCELLENT Fluorescence NONE Inscription(s) LG644404761 Comments: This Laboratory Grown Diamond was created by Chemical Vapor Deposition (CVD) growth process. Type IIa



July 19, 2024 IGI Report No LG644404761 ROUND BRILLIANT 7.88 - 7.97 X 4.88 MM 1.90 CARAT D VS 1 IDEAL 61.6% 59% Medium (Faceted) Pointed EXCELLENT EXCELLENT NONE NONE LG644404761

LABORATORY GROWN DIAMOND REPORT

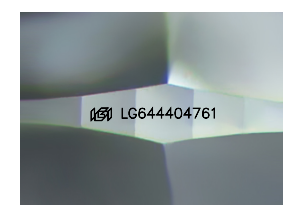
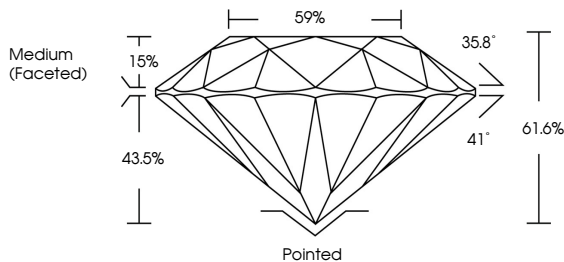
July 19, 2024 IGI Report Number LG644404761 Description LABORATORY GROWN DIAMOND Shape and Cutting Style ROUND BRILLIANT Measurements 7.88 - 7.97 X 4.88 MM

GRADING RESULTS Carat Weight 1.90 CARAT Color Grade D Clarity Grade VS 1 Cut Grade IDEAL

ADDITIONAL GRADING INFORMATION Polish EXCELLENT Symmetry EXCELLENT Fluorescence NONE Inscription(s) LG644404761

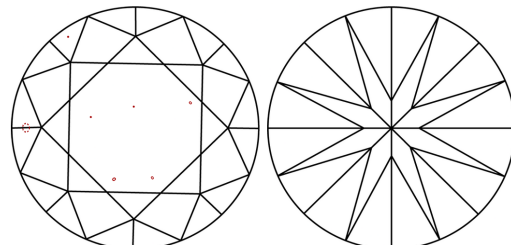
Comments: This Laboratory Grown Diamond was created by Chemical Vapor Deposition (CVD) growth process. Type IIa

PROPORTIONS



Sample Image Used

CLARITY CHARACTERISTICS



KEY TO SYMBOLS Red symbols indicate internal characteristics. Green symbols indicate external characteristics.

COLOR table with columns D, E, F, G, H, I, J, Faint, Very Light, Light

CLARITY table with columns IF, VS 1-2, VS 1-2, SI 1-2, I 1-3, Internally Flawless, Very Very Slightly Included, Very Slightly Included, Slightly Included, Included



Summary of report details including date, report number, measurements, grading results, and additional information.