



ELECTRONIC COPY

LG644405413
Report verification at igi.org



July 19, 2024

IGI Report Number **LG644405413**

Description **LABORATORY GROWN DIAMOND**

Shape and Cutting Style **PRINCESS CUT**

Measurements **6.66 X 6.49 X 4.67 MM**

GRADING RESULTS

Carat Weight **1.81 CARAT**

Color Grade **E**

Clarity Grade **VS 2**

July 19, 2024

IGI Report Number **LG644405413**

Description **LABORATORY GROWN DIAMOND**

Shape and Cutting Style **PRINCESS CUT**

Measurements **6.66 X 6.49 X 4.67 MM**

GRADING RESULTS

Carat Weight **1.81 CARAT**

Color Grade **E**

Clarity Grade **VS 2**

ADDITIONAL GRADING INFORMATION

Polish **EXCELLENT**

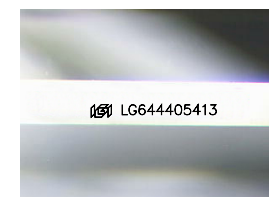
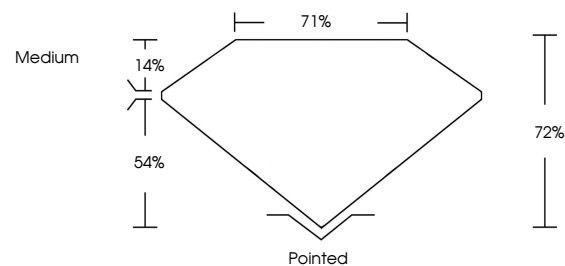
Symmetry **EXCELLENT**

Fluorescence **NONE**

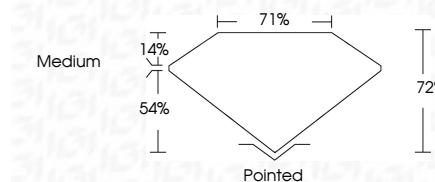
Inscription(s) **IGI LG644405413**

Comments: This Laboratory Grown Diamond was created by Chemical Vapor Deposition (CVD) growth process. Type IIa

PROPORTIONS



Sample Image Used



ADDITIONAL GRADING INFORMATION

Polish **EXCELLENT**

Symmetry **EXCELLENT**

Fluorescence **NONE**

Inscription(s) **IGI LG644405413**

Comments: This Laboratory Grown Diamond was created by Chemical Vapor Deposition (CVD) growth process. Type IIa

COLOR

D	E	F	G	H	I	J	Faint	Very Light	Light
---	---	---	---	---	---	---	-------	------------	-------

CLARITY

IF	VS ¹⁻²	VS ¹⁻²	SI ¹⁻²	I ¹⁻³
Internally Flawless	Very Very Slightly Included	Very Slightly Included	Slightly Included	Included



IGI



July 19, 2024
IGI Report No LG644405413
PRINCESS CUT

6.66 X 6.49 X 4.67 MM

1.81 CARAT
E
VS 2
72%
71%
Medium
Pointed
EXCELLENT
EXCELLENT
NONE
IGI LG644405413

Comments: This Laboratory Grown Diamond was created by Chemical Vapor Deposition (CVD) growth process. Type IIa