



**ELECTRONIC COPY**

LG644408905  
Report verification at igi.org



August 13, 2024

IGI Report Number **LG644408905**

Description **LABORATORY GROWN DIAMOND**

Shape and Cutting Style **ROUND BRILLIANT**

Measurements **7.50 - 7.58 X 4.50 MM**

**GRADING RESULTS**

Carat Weight **1.54 CARAT**

Color Grade **F**

Clarity Grade **VVS 1**

Cut Grade **IDEAL**

August 13, 2024  
IGI Report Number **LG644408905**  
Description **LABORATORY GROWN DIAMOND**  
Shape and Cutting Style **ROUND BRILLIANT**  
Measurements **7.50 - 7.58 X 4.50 MM**

**GRADING RESULTS**

Carat Weight **1.54 CARAT**

Color Grade **F**

Clarity Grade **VVS 1**

Cut Grade **IDEAL**

**ADDITIONAL GRADING INFORMATION**

Polish **EXCELLENT**

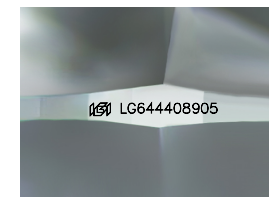
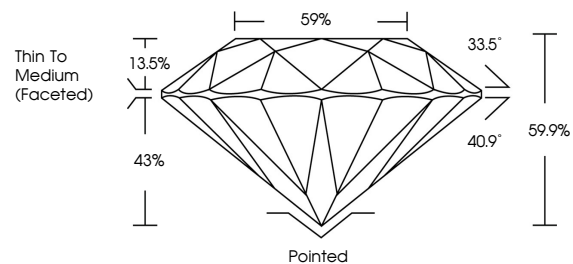
Symmetry **EXCELLENT**

Fluorescence **NONE**

Inscription(s) **LG644408905**

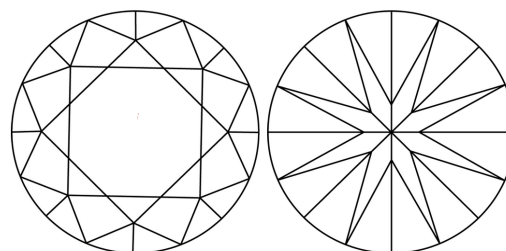
Comments: This Laboratory Grown Diamond was created by Chemical Vapor Deposition (CVD) growth process.  
Type IIa

**PROPORTIONS**



Sample Image Used

**CLARITY CHARACTERISTICS**



**KEY TO SYMBOLS**

Red symbols indicate internal characteristics.  
Green symbols indicate external characteristics.

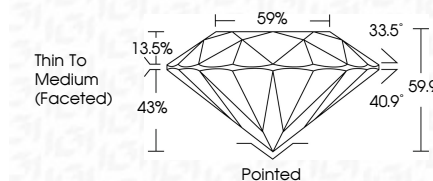
**COLOR**

D E F G H I J Faint Very Light Light

**CLARITY**

IF VS<sup>1-2</sup> VS<sup>1-2</sup> SI<sup>1-2</sup> I<sup>1-3</sup>

Internally Flawless Very Very Slightly Included Very Slightly Included Slightly Included Included



**ADDITIONAL GRADING INFORMATION**

Polish **EXCELLENT**

Symmetry **EXCELLENT**

Fluorescence **NONE**

Inscription(s) **LG644408905**

Comments: This Laboratory Grown Diamond was created by Chemical Vapor Deposition (CVD) growth process.  
Type IIa



**IGI**



August 13, 2024	1.54 CARAT	F	VVS 1	IDEAL	59%	43%	33.5°	40.9°	Pointed	EXCELLENT	EXCELLENT	NONE	LG644408905
IGI Report No LG644408905	Carat Weight	Color Grade	Clarity Grade	Cut Grade	Depth	Table	Girdle	Thin To Medium (Faceted)	Culet	Polish	Symmetry	Fluorescence	Inscription(s)
ROUND BRILLIANT	7.50 - 7.58 X 4.50 MM	IDEAL	59%	43%	33.5°	40.9°	Pointed	EXCELLENT	EXCELLENT	NONE	LG644408905	Comments: This Laboratory Grown Diamond was created by Chemical Vapor Deposition (CVD) growth process. Type IIa	