



**ELECTRONIC COPY**

LG644408953  
Report verification at igi.org



August 16, 2024  
IGI Report Number **LG644408953**

Description **LABORATORY GROWN DIAMOND**

Shape and Cutting Style **PRINCESS CUT**

Measurements **7.12 X 7.02 X 4.82 MM**

**GRADING RESULTS**

Carat Weight **2.05 CARATS**

Color Grade **F**

Clarity Grade **VVS 2**

**LABORATORY GROWN DIAMOND REPORT**

August 16, 2024

IGI Report Number **LG644408953**

Description **LABORATORY GROWN DIAMOND**

Shape and Cutting Style **PRINCESS CUT**

Measurements **7.12 X 7.02 X 4.82 MM**

**GRADING RESULTS**

Carat Weight **2.05 CARATS**

Color Grade **F**

Clarity Grade **VVS 2**

**ADDITIONAL GRADING INFORMATION**

Polish **EXCELLENT**

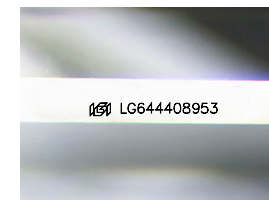
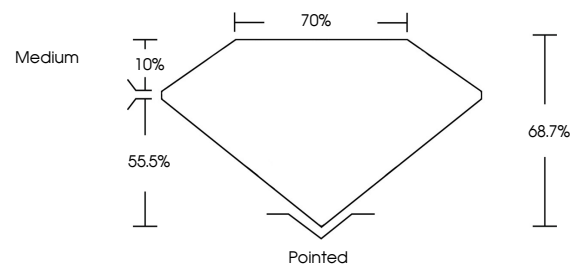
Symmetry **EXCELLENT**

Fluorescence **NONE**

Inscription(s) **IGI LG644408953**

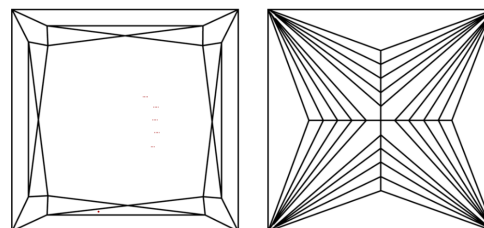
Comments: This Laboratory Grown Diamond was created by Chemical Vapor Deposition (CVD) growth process. Type IIa

**PROPORTIONS**



Sample Image Used

**CLARITY CHARACTERISTICS**



**KEY TO SYMBOLS**

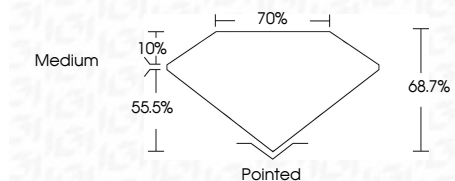
Red symbols indicate internal characteristics.  
Green symbols indicate external characteristics.

**COLOR**

D E F G H I J Faint Very Light Light

**CLARITY**

IF	VS <sup>1-2</sup>	VS <sup>1-2</sup>	SI <sup>1-2</sup>	I <sup>1-3</sup>
Internally Flawless	Very Very Slightly Included	Very Slightly Included	Slightly Included	Included



**ADDITIONAL GRADING INFORMATION**

Polish **EXCELLENT**

Symmetry **EXCELLENT**

Fluorescence **NONE**

Inscription(s) **IGI LG644408953**

Comments: This Laboratory Grown Diamond was created by Chemical Vapor Deposition (CVD) growth process. Type IIa



**IGI**



August 16, 2024  
IGI Report No LG644408953  
PRINCESS CUT  
2.05 CARATS  
F  
2.05 CARATS  
F  
VVS 2  
68.7%  
70%  
Medium  
Pointed  
EXCELLENT  
EXCELLENT  
NONE  
IGI LG644408953  
Comments: This Laboratory Grown Diamond was created by Chemical Vapor Deposition (CVD) growth process. Type IIa