



ELECTRONIC COPY

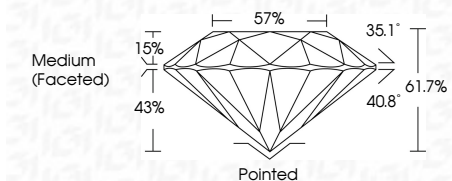
LG644410418
Report verification at igi.org



September 2, 2024
IGI Report Number LG644410418
Description LABORATORY GROWN DIAMOND
Shape and Cutting Style ROUND BRILLIANT
Measurements 9.28 - 9.38 X 5.74 MM

GRADING RESULTS

Carat Weight 3.05 CARATS
Color Grade F
Clarity Grade VVS 1
Cut Grade IDEAL



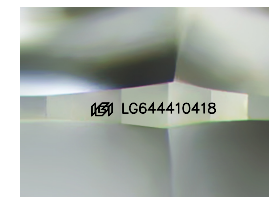
ADDITIONAL GRADING INFORMATION

Polish EXCELLENT
Symmetry EXCELLENT
Fluorescence NONE
Inscription(s) IGI LG644410418
Comments: This Laboratory Grown Diamond was created by Chemical Vapor Deposition (CVD) growth process. Type IIa



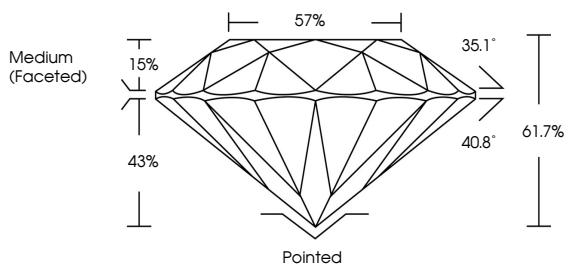
IGI

September 2, 2024
IGI Report No LG644410418
ROUND BRILLIANT
3.05 CARATS F
9.28 - 9.38 X 5.74 MM
Carat Weight
Color Grade
Clarity Grade VVS 1
Cut Grade IDEAL
Depth 61.7%
Table 57%
Girdle
Medium (Faceted)
Culet Pointed
Polish EXCELLENT
Symmetry EXCELLENT
Fluorescence NONE
Inscription(s) IGI LG644410418
Comments: This Laboratory Grown Diamond was created by Chemical Vapor Deposition (CVD) growth process. Type IIa

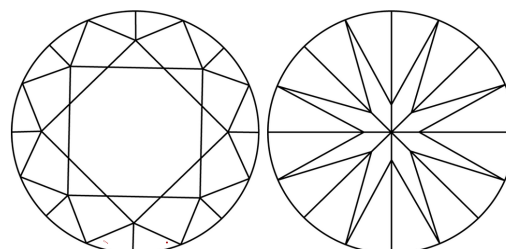


Sample Image Used

PROPORTIONS



CLARITY CHARACTERISTICS



KEY TO SYMBOLS

Red symbols indicate internal characteristics.
Green symbols indicate external characteristics.

COLOR

D E F G H I J Faint Very Light Light

CLARITY

IF VVS 1-2 VS 1-2 SI 1-2 I 1-3
Internally Flawless Very Very Slightly Included Very Slightly Included Slightly Included Included

