



**ELECTRONIC COPY**

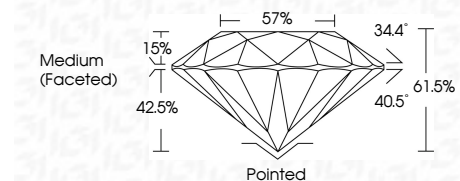
LG644410677  
Report verification at igi.org



September 4, 2024  
IGI Report Number **LG644410677**  
Description **LABORATORY GROWN DIAMOND**  
Shape and Cutting Style **ROUND BRILLIANT**  
Measurements **6.44 - 6.48 X 3.97 MM**

**GRADING RESULTS**

Carat Weight **1.02 CARAT**  
Color Grade **D**  
Clarity Grade **VVS 1**  
Cut Grade **IDEAL**



**ADDITIONAL GRADING INFORMATION**

Polish **EXCELLENT**  
Symmetry **EXCELLENT**  
Fluorescence **NONE**  
Inscription(s) **IGI LG644410677**  
Comments: This Laboratory Grown Diamond was created by Chemical Vapor Deposition (CVD) growth process. Type IIa



September 4, 2024  
IGI Report No LG644410677  
**ROUND BRILLIANT**  
6.44 - 6.48 X 3.97 MM  
1.02 CARAT  
D  
VVS 1  
IDEAL  
6.05%  
57%  
Medium (Faceted)  
Pointed  
EXCELLENT  
EXCELLENT  
NONE  
IGI LG644410677  
Comments: This Laboratory Grown Diamond was created by Chemical Vapor Deposition (CVD) growth process. Type IIa

September 4, 2024  
IGI Report Number **LG644410677**  
Description **LABORATORY GROWN DIAMOND**  
Shape and Cutting Style **ROUND BRILLIANT**  
Measurements **6.44 - 6.48 X 3.97 MM**

**GRADING RESULTS**

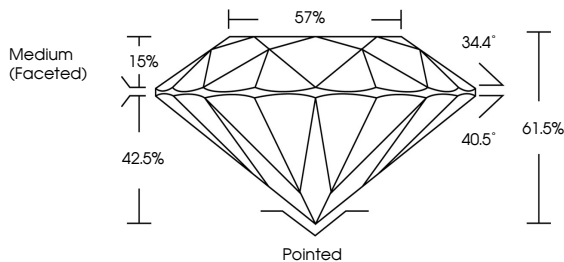
Carat Weight **1.02 CARAT**  
Color Grade **D**  
Clarity Grade **VVS 1**  
Cut Grade **IDEAL**

**ADDITIONAL GRADING INFORMATION**

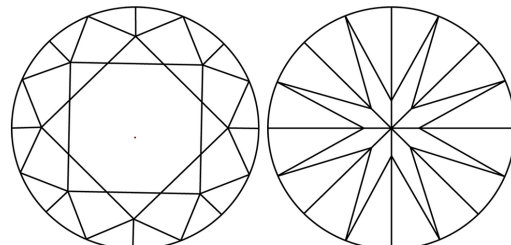
Polish **EXCELLENT**  
Symmetry **EXCELLENT**  
Fluorescence **NONE**  
Inscription(s) **IGI LG644410677**

Comments: This Laboratory Grown Diamond was created by Chemical Vapor Deposition (CVD) growth process. Type IIa

**PROPORTIONS**

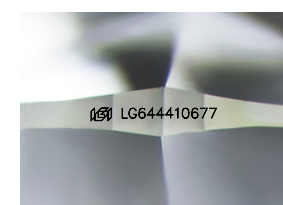


**CLARITY CHARACTERISTICS**



**KEY TO SYMBOLS**

Red symbols indicate internal characteristics.  
Green symbols indicate external characteristics.



Sample Image Used

**COLOR**

D E F G H I J Faint Very Light Light

**CLARITY**

IF	VS <sup>1-2</sup>	VS <sup>1-2</sup>	SI <sup>1-2</sup>	I <sup>1-3</sup>
Internally Flawless	Very Very Slightly Included	Very Slightly Included	Slightly Included	Included

