



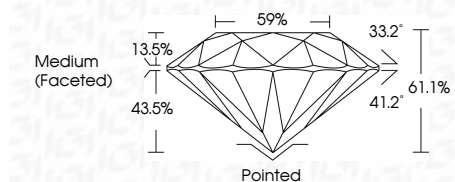
ELECTRONIC COPY

LG644410765 Report verification at igi.org



September 4, 2024 IGI Report Number LG644410765 Description LABORATORY GROWN DIAMOND Shape and Cutting Style ROUND BRILLIANT Measurements 9.32 - 9.35 X 5.70 MM

GRADING RESULTS Carat Weight 3.04 CARATS Color Grade E Clarity Grade VS 1 Cut Grade IDEAL



ADDITIONAL GRADING INFORMATION Polish EXCELLENT Symmetry EXCELLENT Fluorescence NONE Inscription(s) IGI LG644410765 Comments: This Laboratory Grown Diamond was created by Chemical Vapor Deposition (CVD) growth process. Type IIa



September 4, 2024 IGI Report No LG644410765 ROUND BRILLIANT 9.32 - 9.35 X 5.70 MM 3.04 CARATS E VS 1 IDEAL 61.1% 59% Medium (Faceted) Pointed EXCELLENT EXCELLENT NONE NONE IGI LG644410765 Comments: This Laboratory Grown Diamond was created by Chemical Vapor Deposition (CVD) growth process. Type IIa

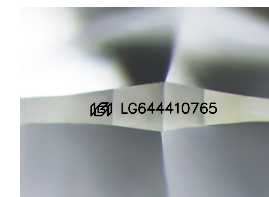
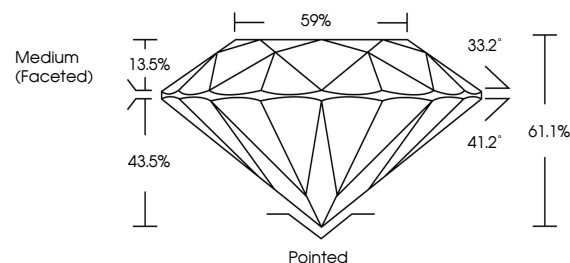
September 4, 2024 IGI Report Number LG644410765 Description LABORATORY GROWN DIAMOND Shape and Cutting Style ROUND BRILLIANT Measurements 9.32 - 9.35 X 5.70 MM

GRADING RESULTS Carat Weight 3.04 CARATS Color Grade E Clarity Grade VS 1 Cut Grade IDEAL

ADDITIONAL GRADING INFORMATION Polish EXCELLENT Symmetry EXCELLENT Fluorescence NONE Inscription(s) IGI LG644410765

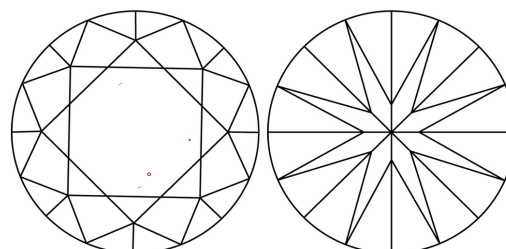
Comments: This Laboratory Grown Diamond was created by Chemical Vapor Deposition (CVD) growth process. Type IIa

PROPORTIONS



Sample Image Used

CLARITY CHARACTERISTICS



KEY TO SYMBOLS

Red symbols indicate internal characteristics. Green symbols indicate external characteristics.

COLOR

D E F G H I J Faint Very Light Light

CLARITY

IF VS 1-2 VS 1-2 SI 1-2 I 1-3 Internally Flawless Very Very Slightly Included Very Slightly Included Slightly Included Included

