



**ELECTRONIC COPY**

LG644411827  
Report verification at igi.org



October 1, 2024

IGI Report Number **LG644411827**

Description **LABORATORY GROWN DIAMOND**

Shape and Cutting Style **PRINCESS CUT**

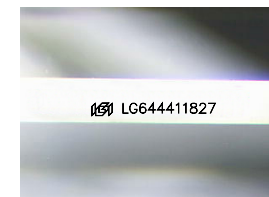
Measurements **6.98 X 6.94 X 4.94 MM**

**GRADING RESULTS**

Carat Weight **2.08 CARATS**

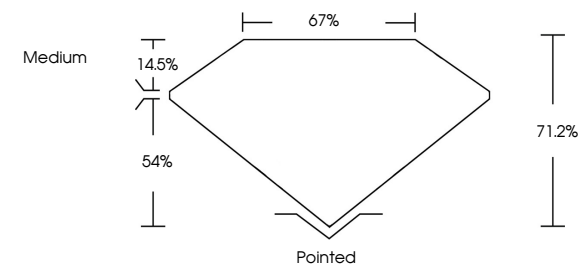
Color Grade **F**

Clarity Grade **VVS 1**

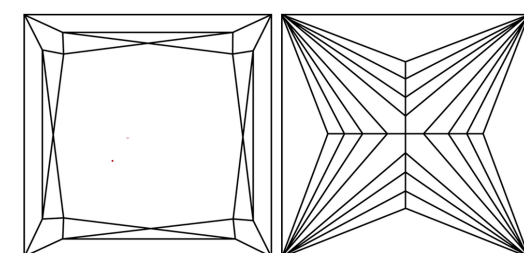


Sample Image Used

**PROPORTIONS**



**CLARITY CHARACTERISTICS**



**KEY TO SYMBOLS**

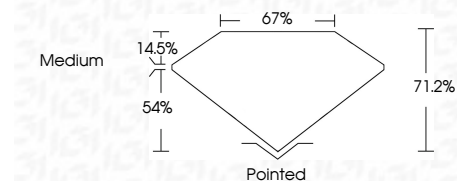
Red symbols indicate internal characteristics.  
Green symbols indicate external characteristics.

**COLOR**

D	E	F	G	H	I	J	Faint	Very Light	Light
---	---	---	---	---	---	---	-------	------------	-------

**CLARITY**

IF	VS <sup>1-2</sup>	VS <sup>1-2</sup>	SI <sup>1-2</sup>	I <sup>1-3</sup>
Internally Flawless	Very Very Slightly Included	Very Slightly Included	Slightly Included	Included



**ADDITIONAL GRADING INFORMATION**

Polish **EXCELLENT**

Symmetry **EXCELLENT**

Fluorescence **NONE**

Inscription(s) **IGI LG644411827**

Comments: This Laboratory Grown Diamond was created by Chemical Vapor Deposition (CVD) growth process.  
Type IIa



**IGI**



October 1, 2024  
IGI Report No LG644411827  
PRINCESS CUT

2.08 CARATS  
F

6.98 X 6.94 X 4.94 MM

Carat Weight  
Color Grade  
Clarity Grade  
Depth  
Table  
Girdle  
Medium

Pointed  
EXCELLENT  
EXCELLENT  
NONE  
IGI LG644411827

Culet  
Polish  
Symmetry  
Fluorescence  
Inscription(s)

Comments: This Laboratory Grown Diamond was created by Chemical Vapor Deposition (CVD) growth process.  
Type IIa