



ELECTRONIC COPY

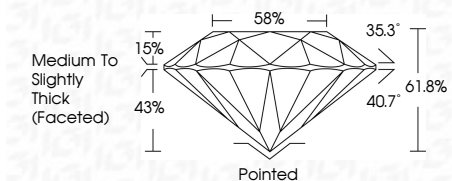
LG644412474 Report verification at igi.org



September 9, 2024 IGI Report Number LG644412474 Description LABORATORY GROWN DIAMOND Shape and Cutting Style ROUND BRILLIANT Measurements 6.56 - 6.60 X 4.07 MM

GRADING RESULTS

Carat Weight 1.09 CARAT Color Grade D Clarity Grade VVS 2 Cut Grade IDEAL

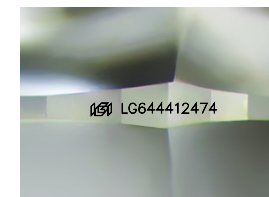


ADDITIONAL GRADING INFORMATION

Polish EXCELLENT Symmetry EXCELLENT Fluorescence NONE Inscription(s) IGI LG644412474 Comments: As Grown - No indication of post-growth treatment. This Laboratory Grown Diamond was created by High Pressure High Temperature (HPHT) growth process. Type II

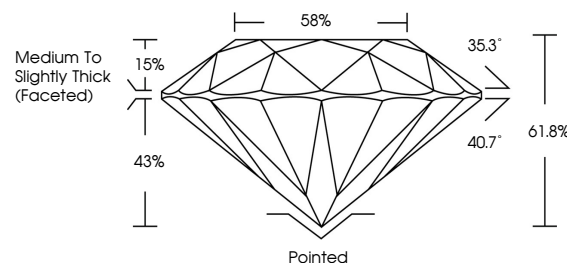


September 9, 2024 IGI Report No LG644412474 ROUND BRILLIANT 6.56 - 6.60 X 4.07 MM 1.09 CARAT D VVS 2 IDEAL 61.8% 58% Medium To Slightly Thick (Faceted) Pointed EXCELLENT EXCELLENT NONE IGI LG644412474 Comments: As Grown - No indication of post-growth treatment. This Laboratory Grown Diamond was created by High Pressure High Temperature (HPHT) growth process. Type II

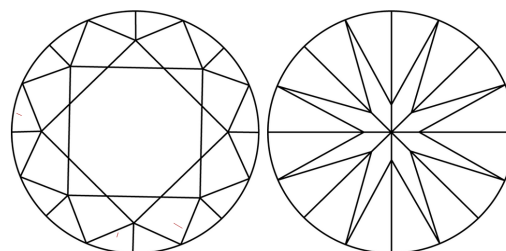


Sample Image Used

PROPORTIONS



CLARITY CHARACTERISTICS



KEY TO SYMBOLS

Red symbols indicate internal characteristics. Green symbols indicate external characteristics.

COLOR

D E F G H I J Faint Very Light Light

CLARITY

IF VVS 1-2 VS 1-2 SI 1-2 I 1-3 Internally Flawless Very Very Slightly Included Very Slightly Included Slightly Included Included

