



**ELECTRONIC COPY**

LG644416444  
Report verification at igi.org



July 23, 2024

IGI Report Number **LG644416444**

Description **LABORATORY GROWN DIAMOND**

Shape and Cutting Style **CUSHION MIXED CUT**

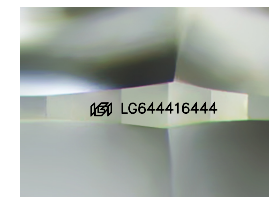
Measurements **9.94 X 6.15 X 3.83 MM**

**GRADING RESULTS**

Carat Weight **2.10 CARATS**

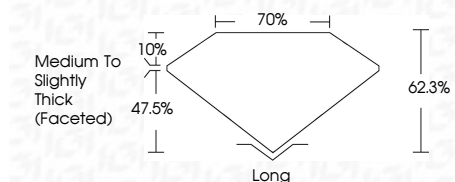
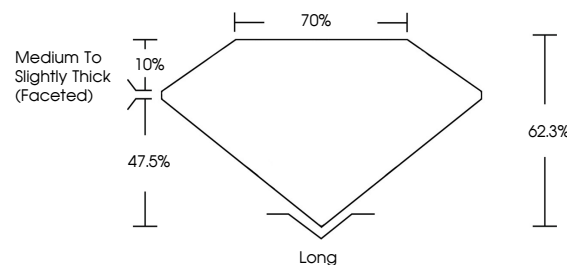
Color Grade **H**

Clarity Grade **VS 1**

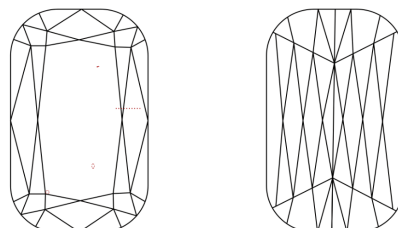


Sample Image Used

**PROPORTIONS**



**CLARITY CHARACTERISTICS**



**KEY TO SYMBOLS**

Red symbols indicate internal characteristics.  
Green symbols indicate external characteristics.

**COLOR**

D E F G H I J Faint Very Light Light

**CLARITY**

IF	VS <sup>1-2</sup>	VS <sup>1-2</sup>	SI <sup>1-2</sup>	I <sup>1-3</sup>
Internally Flawless	Very Very Slightly Included	Very Slightly Included	Slightly Included	Included

**ADDITIONAL GRADING INFORMATION**

Polish **EXCELLENT**

Symmetry **EXCELLENT**

Fluorescence **NONE**

Inscription(s) **IGI LG644416444**

Comments: This Laboratory Grown Diamond was created by Chemical Vapor Deposition (CVD) growth process.  
Type IIa



**IGI**



July 23, 2024  
IGI Report No LG644416444  
CUSHION MIXED CUT

9.94 X 6.15 X 3.83 MM

2.10 CARATS H

Color Grade VS 1

Depth 62.3%

Table 70%

Girdle Medium to Slightly Thick (Faceted)

Culet Long

Polish EXCELLENT

Symmetry EXCELLENT

Fluorescence NONE

Inscription(s) IGI LG644416444

Comments: This Laboratory Grown Diamond was created by Chemical Vapor Deposition (CVD) growth process.  
Type IIa