



**ELECTRONIC COPY**

LG644416778  
Report verification at igi.org



July 25, 2024

IGI Report Number **LG644416778**

Description **LABORATORY GROWN DIAMOND**

Shape and Cutting Style **ROUND BRILLIANT**

Measurements **6.53 - 6.55 X 3.97 MM**

**GRADING RESULTS**

Carat Weight **1.04 CARAT**

Color Grade **FANCY INTENSE PINK**

Clarity Grade **VS 1**

Cut Grade **IDEAL**

July 25, 2024

IGI Report Number **LG644416778**

Description **LABORATORY GROWN DIAMOND**

Shape and Cutting Style **ROUND BRILLIANT**

Measurements **6.53 - 6.55 X 3.97 MM**

**GRADING RESULTS**

Carat Weight **1.04 CARAT**

Color Grade **FANCY INTENSE PINK**

Clarity Grade **VS 1**

Cut Grade **IDEAL**

**ADDITIONAL GRADING INFORMATION**

Polish **EXCELLENT**

Symmetry **EXCELLENT**

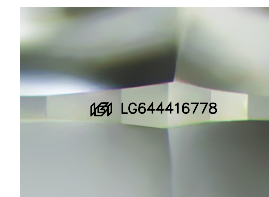
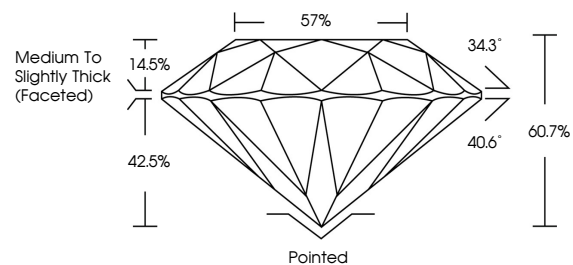
Fluorescence **SLIGHT**

Inscription(s) **LG644416778**

Comments: This Laboratory Grown Diamond was created by Chemical Vapor Deposition (CVD) growth process.

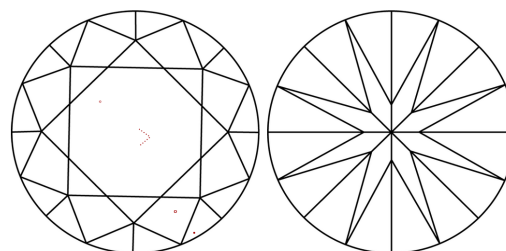
Indications of post-growth treatment.

**PROPORTIONS**



Sample Image Used

**CLARITY CHARACTERISTICS**



**KEY TO SYMBOLS**

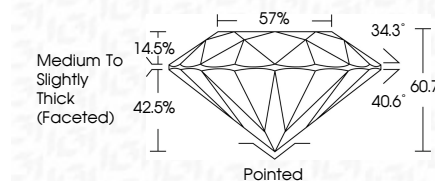
Red symbols indicate internal characteristics.  
Green symbols indicate external characteristics.

**COLOR**

D E F G H I J Faint Very Light Light

**CLARITY**

IF	VS <sup>1-2</sup>	VS <sup>1-2</sup>	SI <sup>1-2</sup>	I <sup>1-3</sup>
Internally Flawless	Very Very Slightly Included	Very Slightly Included	Slightly Included	Included



**ADDITIONAL GRADING INFORMATION**

Polish **EXCELLENT**

Symmetry **EXCELLENT**

Fluorescence **SLIGHT**

Inscription(s) **LG644416778**

Comments: This Laboratory Grown Diamond was created by Chemical Vapor Deposition (CVD) growth process. Indications of post-growth treatment.



**IGI**



July 25, 2024  
IGI Report No LG644416778  
**ROUND BRILLIANT**  
6.53 - 6.55 X 3.97 MM  
1.04 CARAT  
FANCY INTENSE PINK  
VS 1  
IDEAL  
60.7%  
57%  
Medium To Slightly Thick (Faceted)  
Pointed  
EXCELLENT  
EXCELLENT  
SLIGHT  
SLIGHT  
IGI LG644416778

Comments: This Laboratory Grown Diamond was created by Chemical Vapor Deposition (CVD) growth process. Indications of post-growth treatment.