



ELECTRONIC COPY

LG644417217
Report verification at igi.org



July 26, 2024

IGI Report Number **LG644417217**

Description **LABORATORY GROWN DIAMOND**

Shape and Cutting Style **ROUND BRILLIANT**

Measurements **6.68 - 6.73 X 4.19 MM**

GRADING RESULTS

Carat Weight **1.16 CARAT**

Color Grade **FANCY PINK**

Clarity Grade **VS 2**

Cut Grade **EXCELLENT**

July 26, 2024
IGI Report Number **LG644417217**
Description **LABORATORY GROWN DIAMOND**
Shape and Cutting Style **ROUND BRILLIANT**
Measurements **6.68 - 6.73 X 4.19 MM**

GRADING RESULTS

Carat Weight **1.16 CARAT**

Color Grade **FANCY PINK**

Clarity Grade **VS 2**

Cut Grade **EXCELLENT**

ADDITIONAL GRADING INFORMATION

Polish **EXCELLENT**

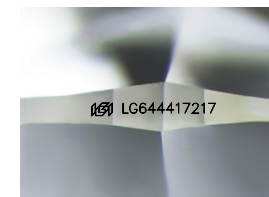
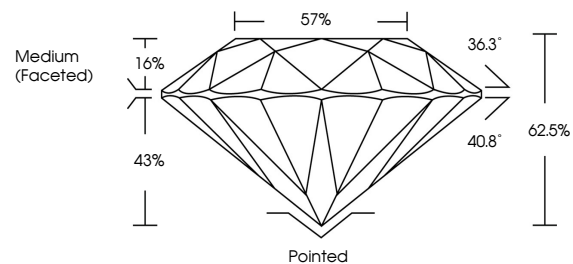
Symmetry **EXCELLENT**

Fluorescence **SLIGHT**

Inscription(s) **LG644417217**

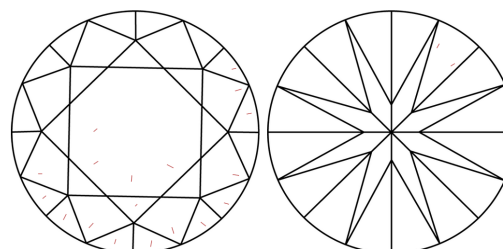
Comments: This Laboratory Grown Diamond was created by High Pressure High Temperature (HPHT) growth process. Indications of post-growth treatment.

PROPORTIONS



Sample Image Used

CLARITY CHARACTERISTICS



KEY TO SYMBOLS

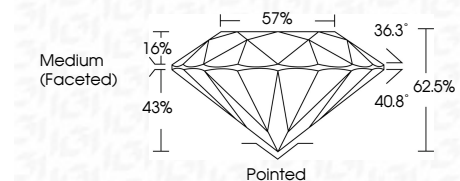
Red symbols indicate internal characteristics.
Green symbols indicate external characteristics.

COLOR

D E F G H I J Faint Very Light Light

CLARITY

IF	VS ¹⁻²	VS ¹⁻²	SI ¹⁻²	I ¹⁻³
Internally Flawless	Very Very Slightly Included	Very Slightly Included	Slightly Included	Included



ADDITIONAL GRADING INFORMATION

Polish **EXCELLENT**

Symmetry **EXCELLENT**

Fluorescence **SLIGHT**

Inscription(s) **LG644417217**

Comments: This Laboratory Grown Diamond was created by High Pressure High Temperature (HPHT) growth process. Indications of post-growth treatment.



IGI



July 26, 2024
IGI Report No **LG644417217**
ROUND BRILLIANT

6.68 - 6.73 X 4.19 MM

Carat Weight **1.16 CARAT**
Color Grade **FANCY PINK**
Clarity Grade **VS 2**
Depth **EXCELLENT**
Table **62.5%**
Girdle **57%**
Medium (Faceted)

Culet **Pointed**
Polish **EXCELLENT**
Symmetry **EXCELLENT**
Fluorescence **SLIGHT**
Inscription(s) **LG644417217**

Comments: This Laboratory Grown Diamond was created by High Pressure High Temperature (HPHT) growth process. Indications of post-growth treatment.