



ELECTRONIC COPY

LG644418053
Report verification at igi.org



July 26, 2024
IGI Report Number LG644418053
Description LABORATORY GROWN DIAMOND
Shape and Cutting Style SQUARE CUSHION MODIFIED BRILLIANT
Measurements 7.16 X 6.87 X 4.62 MM
GRADING RESULTS
Carat Weight 2.12 CARATS
Color Grade FANCY INTENSE YELLOW
Clarity Grade VVS 2

LABORATORY GROWN DIAMOND REPORT

July 26, 2024
IGI Report Number LG644418053
Description LABORATORY GROWN DIAMOND
Shape and Cutting Style SQUARE CUSHION MODIFIED BRILLIANT
Measurements 7.16 X 6.87 X 4.62 MM

GRADING RESULTS

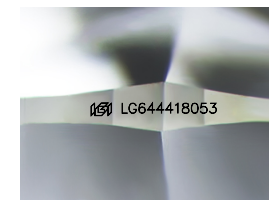
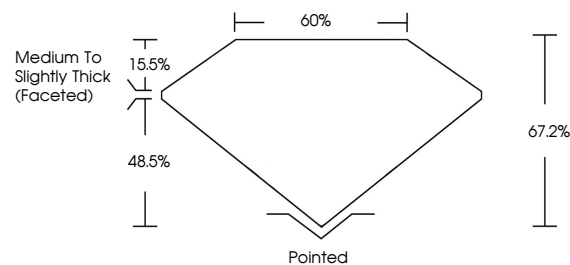
Carat Weight 2.12 CARATS
Color Grade FANCY INTENSE YELLOW
Clarity Grade VVS 2

ADDITIONAL GRADING INFORMATION

Polish EXCELLENT
Symmetry EXCELLENT
Fluorescence NONE
Inscription(s) LG644418053

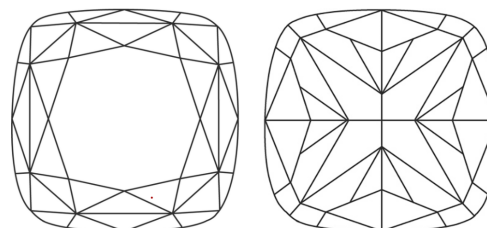
Comments: This Laboratory Grown Diamond was created by Chemical Vapor Deposition (CVD) growth process.

PROPORTIONS



Sample Image Used

CLARITY CHARACTERISTICS



KEY TO SYMBOLS

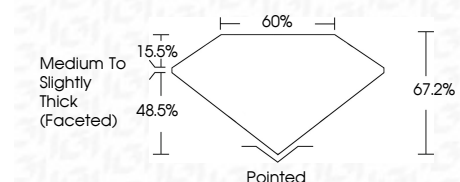
Red symbols indicate internal characteristics.
Green symbols indicate external characteristics.

COLOR

D E F G H I J Faint Very Light Light

CLARITY

Table with columns for clarity grades: IF, VS 1-2, VS 1-2, SI 1-2, I 1-3 and their corresponding descriptions: Internally Flawless, Very Very Slightly Included, Very Slightly Included, Slightly Included, Included



ADDITIONAL GRADING INFORMATION

Polish EXCELLENT
Symmetry EXCELLENT
Fluorescence NONE
Inscription(s) LG644418053
Comments: This Laboratory Grown Diamond was created by Chemical Vapor Deposition (CVD) growth process.



Summary of report details including date, report number, description, measurements, grading results, and additional information.