



ELECTRONIC COPY

LABORATORY GROWN DIAMOND REPORT

July 30, 2024
IGI Report Number LG644418079
Description LABORATORY GROWN DIAMOND
Shape and Cutting Style CUT CORNERED RECTANGULAR MODIFIED BRILLIANT
Measurements 6.74 X 5.03 X 3.46 MM

GRADING RESULTS

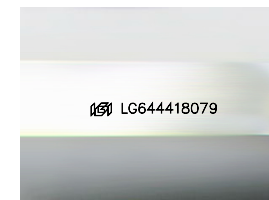
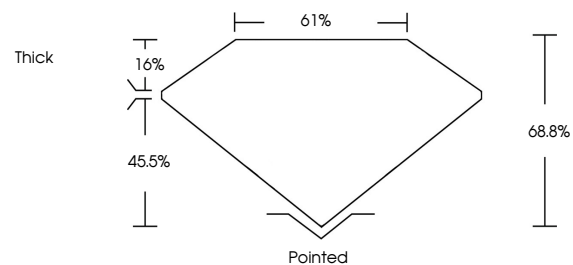
Carat Weight 1.15 CARAT
Color Grade FANCY VIVID YELLOW
Clarity Grade VVS 2

ADDITIONAL GRADING INFORMATION

Polish EXCELLENT
Symmetry EXCELLENT
Fluorescence NONE
Inscription(s) LG644418079

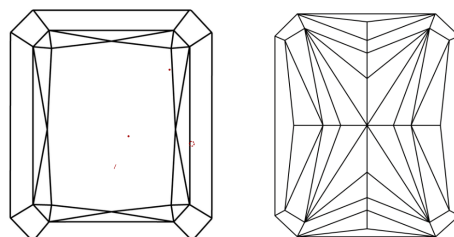
Comments: This Laboratory Grown Diamond was created by Chemical Vapor Deposition (CVD) growth process.

PROPORTIONS



Sample Image Used

CLARITY CHARACTERISTICS



KEY TO SYMBOLS

Red symbols indicate internal characteristics.
Green symbols indicate external characteristics.

COLOR

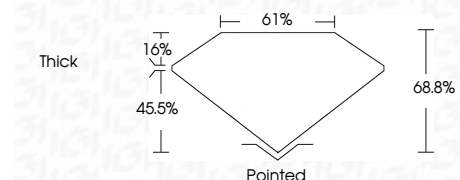
D E F G H I J Faint Very Light Light

CLARITY

IF VS 1-2 VS 1-2 SI 1-2 I 1-3
Internally Flawless Very Very Slightly Included Very Slightly Included Slightly Included Included



July 30, 2024
IGI Report Number LG644418079
Description LABORATORY GROWN DIAMOND
Shape and Cutting Style CUT CORNERED RECTANGULAR MODIFIED BRILLIANT
Measurements 6.74 X 5.03 X 3.46 MM
GRADING RESULTS
Carat Weight 1.15 CARAT
Color Grade FANCY VIVID YELLOW
Clarity Grade VVS 2



ADDITIONAL GRADING INFORMATION

Polish EXCELLENT
Symmetry EXCELLENT
Fluorescence NONE
Inscription(s) LG644418079
Comments: This Laboratory Grown Diamond was created by Chemical Vapor Deposition (CVD) growth process.



July 30, 2024
IGI Report No LG644418079
CUT CORNERED RECT. MODIFIED BRILLIANT
6.74 X 5.03 X 3.46 MM
1.15 CARAT
FANCY VIVID YELLOW
VVS 2
68.8%
61%
Thick
Pointed
EXCELLENT
EXCELLENT
NONE
LG644418079

Comments: This Laboratory Grown Diamond was created by Chemical Vapor Deposition (CVD) growth process.