



ELECTRONIC COPY

LG644418540
Report verification at igi.org



July 26, 2024
IGI Report Number **LG644418540**
Description **LABORATORY GROWN DIAMOND**
Shape and Cutting Style **CUSHION BRILLIANT**
Measurements **11.80 X 8.42 X 5.96 MM**
GRADING RESULTS
Carat Weight **5.00 CARATS**
Color Grade **F**
Clarity Grade **VVS 1**

LABORATORY GROWN DIAMOND REPORT

July 26, 2024
IGI Report Number **LG644418540**
Description **LABORATORY GROWN DIAMOND**
Shape and Cutting Style **CUSHION BRILLIANT**
Measurements **11.80 X 8.42 X 5.96 MM**

GRADING RESULTS

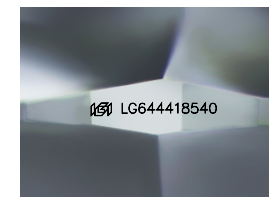
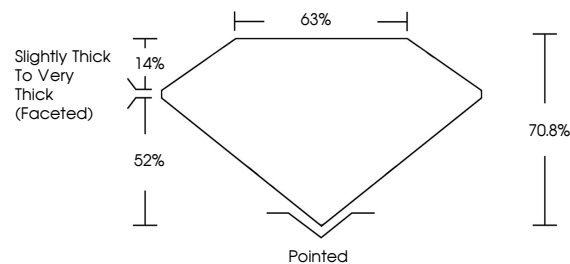
Carat Weight **5.00 CARATS**
Color Grade **F**
Clarity Grade **VVS 1**

ADDITIONAL GRADING INFORMATION

Polish **EXCELLENT**
Symmetry **EXCELLENT**
Fluorescence **NONE**
Inscription(s) **LG644418540**

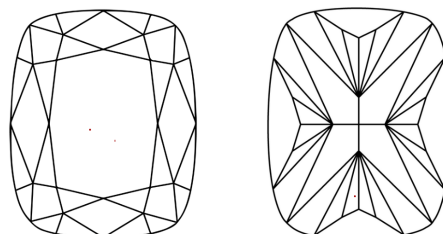
Comments: This Laboratory Grown Diamond was created by Chemical Vapor Deposition (CVD) growth process. Type IIa

PROPORTIONS



Sample Image Used

CLARITY CHARACTERISTICS



KEY TO SYMBOLS

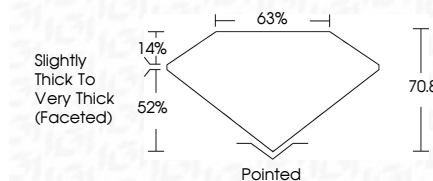
Red symbols indicate internal characteristics.
Green symbols indicate external characteristics.

COLOR

D E F G H I J Faint Very Light Light

CLARITY

| | | | | |
|---------------------|-----------------------------|------------------------|-------------------|------------------|
| IF | VS ¹⁻² | VS ¹⁻² | SI ¹⁻² | I ¹⁻³ |
| Internally Flawless | Very Very Slightly Included | Very Slightly Included | Slightly Included | Included |



ADDITIONAL GRADING INFORMATION

Polish **EXCELLENT**
Symmetry **EXCELLENT**
Fluorescence **NONE**
Inscription(s) **LG644418540**
Comments: This Laboratory Grown Diamond was created by Chemical Vapor Deposition (CVD) growth process. Type IIa



July 26, 2024
IGI Report No LG644418540
CUSHION BRILLIANT
11.80 X 8.42 X 5.96 MM
5.00 CARATS
F
VVS 1
70.8%
63%
Slightly Thick To Very Thick (Faceted)
Pointed
EXCELLENT
EXCELLENT
NONE
None
IGI LG644418540

Comments: This Laboratory Grown Diamond was created by Chemical Vapor Deposition (CVD) growth process. Type IIa

