



ELECTRONIC COPY

LG644418561
Report verification at igi.org



July 23, 2024

IGI Report Number **LG644418561**

Description **LABORATORY GROWN DIAMOND**

Shape and Cutting Style **ROUND BRILLIANT**

Measurements **8.70 - 8.78 X 5.46 MM**

GRADING RESULTS

Carat Weight **2.60 CARATS**

Color Grade **F**

Clarity Grade **VS 1**

Cut Grade **IDEAL**

July 23, 2024
IGI Report Number **LG644418561**
Description **LABORATORY GROWN DIAMOND**
Shape and Cutting Style **ROUND BRILLIANT**
Measurements **8.70 - 8.78 X 5.46 MM**

GRADING RESULTS

Carat Weight **2.60 CARATS**

Color Grade **F**

Clarity Grade **VS 1**

Cut Grade **IDEAL**

ADDITIONAL GRADING INFORMATION

Polish **EXCELLENT**

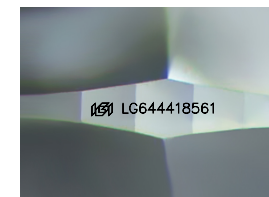
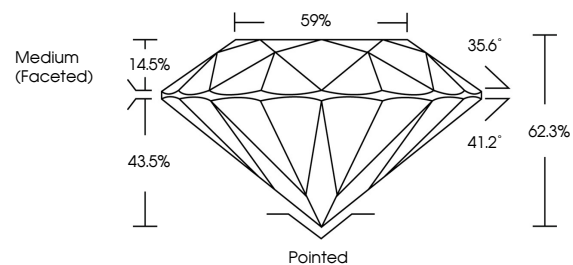
Symmetry **EXCELLENT**

Fluorescence **NONE**

Inscription(s) **LG644418561**

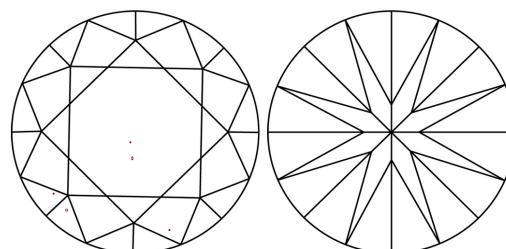
Comments: This Laboratory Grown Diamond was created by Chemical Vapor Deposition (CVD) growth process.
Type IIa

PROPORTIONS



Sample Image Used

CLARITY CHARACTERISTICS



KEY TO SYMBOLS

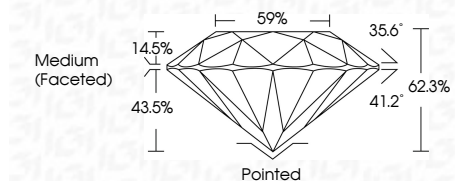
Red symbols indicate internal characteristics.
Green symbols indicate external characteristics.

COLOR

D E F G H I J Faint Very Light Light

CLARITY

IF	VS ¹⁻²	VS ¹⁻²	SI ¹⁻²	I ¹⁻³
Internally Flawless	Very Very Slightly Included	Very Slightly Included	Slightly Included	Included



ADDITIONAL GRADING INFORMATION

Polish **EXCELLENT**

Symmetry **EXCELLENT**

Fluorescence **NONE**

Inscription(s) **LG644418561**

Comments: This Laboratory Grown Diamond was created by Chemical Vapor Deposition (CVD) growth process.
Type IIa



July 23, 2024
IGI Report No LG644418561
ROUND BRILLIANT
8.70 - 8.78 X 5.46 MM
2.60 CARATS
F
VS 1
IDEAL
62.3%
59%
Medium (Faceted)Pointed
EXCELLENT
EXCELLENT
NONE
NONE
IGI LG644418561
Comments: This Laboratory Grown Diamond was created by Chemical Vapor Deposition (CVD) growth process.
Type IIa