



ELECTRONIC COPY

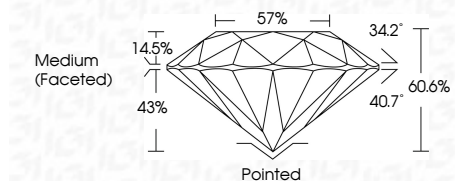
LG644421325
Report verification at igi.org



July 22, 2024
IGI Report Number LG644421325
Description LABORATORY GROWN DIAMOND
Shape and Cutting Style ROUND BRILLIANT
Measurements 7.42 - 7.50 X 4.52 MM

GRADING RESULTS

Carat Weight 1.53 CARAT
Color Grade E
Clarity Grade VS 1
Cut Grade IDEAL

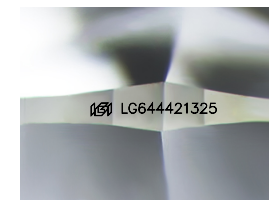


ADDITIONAL GRADING INFORMATION

Polish EXCELLENT
Symmetry EXCELLENT
Fluorescence NONE
Inscription(s) IGI LG644421325
Comments: This Laboratory Grown Diamond was created by Chemical Vapor Deposition (CVD) growth process. Type IIa

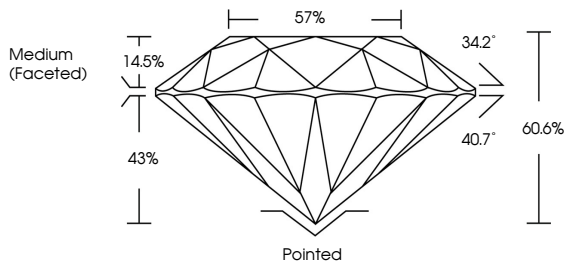


July 22, 2024
IGI Report No LG644421325
ROUND BRILLIANT
7.42 - 7.50 X 4.52 MM
1.53 CARAT
E
Color Grade
VS 1
Clarity Grade
IDEAL
60.6%
57%
Depth
Table
Girdle
Medium (Faceted)
Pointed
EXCELLENT
EXCELLENT
NONE
IGI LG644421325
Comments: This Laboratory Grown Diamond was created by Chemical Vapor Deposition (CVD) growth process. Type IIa

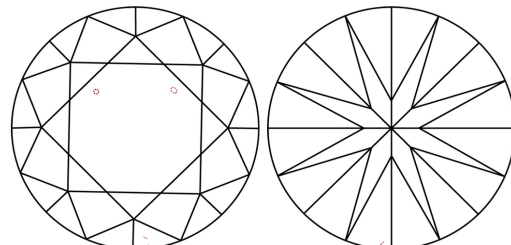


Sample Image Used

PROPORTIONS



CLARITY CHARACTERISTICS



KEY TO SYMBOLS

Red symbols indicate internal characteristics.
Green symbols indicate external characteristics.

COLOR

D E F G H I J Faint Very Light Light

CLARITY

IF VS 1-2 VS 1-2 SI 1-2 I 1-3
Internally Flawless Very Very Slightly Included Very Slightly Included Slightly Included Included

