



**INTERNATIONAL
GEMOLOGICAL
INSTITUTE**

Electronic COPY

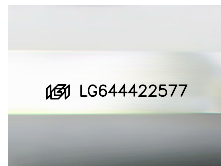
LG644422577



July 20, 2024
IGI Report Number LG644422577
TRAPEZE STEP CUT
LABORATORY GROWN DIAMOND
7.10 X 4.02 X 2.78 MM
 Carat Weight **0.62 CARAT**
 Color Grade **E**
 Clarity Grade **VVS 2**
 Polish **EXCELLENT**
 Symmetry **VERY GOOD**
 Fluorescence **NONE**
 Inscription(s) **IGI LG644422577**

LABORATORY GROWN DIAMOND REPORT

July 20, 2024
 IGI Report Number **LG644422577**
 Description **LABORATORY GROWN DIAMOND**
 Shape and Cutting Style **TRAPEZE STEP CUT**
 Measurements **7.10 X 4.02 X 2.78 MM**



Sample Image Used

Comments: This Laboratory Grown Diamond was created by Chemical Vapor Deposition (CVD) growth process. Type IIa

GRADING RESULTS

Carat Weight **0.62 CARAT**
 Color Grade **E**
 Clarity Grade **VVS 2**

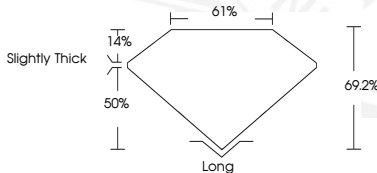
ADDITIONAL GRADING INFORMATION

Polish **EXCELLENT**
 Symmetry **VERY GOOD**
 Fluorescence **NONE**
 Inscription(s) **IGI LG644422577**

Comments: This Laboratory Grown Diamond was created by Chemical Vapor Deposition (CVD) growth process. Type IIa



July 20, 2024
IGI Report Number LG644422577
TRAPEZE STEP CUT
LABORATORY GROWN DIAMOND
7.10 X 4.02 X 2.78 MM
 Carat Weight **0.62 CARAT**
 Color Grade **E**
 Clarity Grade **VVS 2**
 Polish **EXCELLENT**
 Symmetry **VERY GOOD**
 Fluorescence **NONE**
 Inscription(s) **IGI LG644422577**



THIS DOCUMENT WAS PRODUCED WITH THE FOLLOWING SECURITY MEASURES: SPECIAL DOCUMENT PAPER, INK SCREENS, WATERMARK, BACKGROUND DESIGN, HOLOGRAM AND OTHER SECURITY FEATURES NOT LISTED AND DO EXCEED DOCUMENT SECURITY INDUSTRY GUIDELINES.

For terms & conditions and to verify this report, please visit www.igi.org