



ELECTRONIC COPY

LG644422685
Report verification at igi.org



July 20, 2024

IGI Report Number **LG644422685**

Description **LABORATORY GROWN DIAMOND**

Shape and Cutting Style **EMERALD CUT**

Measurements **7.63 X 5.39 X 3.61 MM**

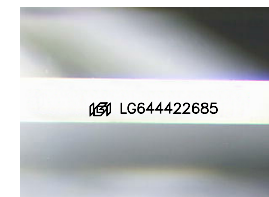
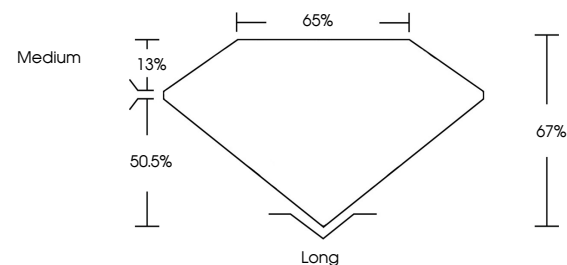
GRADING RESULTS

Carat Weight **1.52 CARAT**

Color Grade **E**

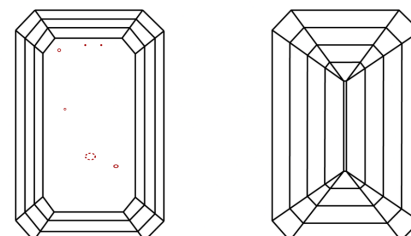
Clarity Grade **VS 2**

PROPORTIONS



Sample Image Used

CLARITY CHARACTERISTICS



KEY TO SYMBOLS

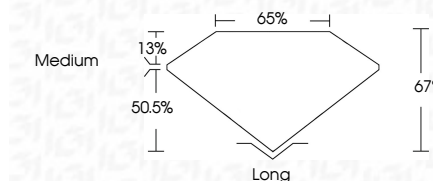
Red symbols indicate internal characteristics.
Green symbols indicate external characteristics.

COLOR

D E F G H I J Faint Very Light Light

CLARITY

IF	VS ¹⁻²	VS ¹⁻²	SI ¹⁻²	I ¹⁻³
Internally Flawless	Very Very Slightly Included	Very Slightly Included	Slightly Included	Included



ADDITIONAL GRADING INFORMATION

Polish **EXCELLENT**

Symmetry **EXCELLENT**

Fluorescence **NONE**

Inscription(s) **IGI LG644422685**

Comments: This Laboratory Grown Diamond was created by Chemical Vapor Deposition (CVD) growth process.
Type IIa



IGI



July 20, 2024
IGI Report No. LG644422685
EMERALD CUT

1.52 CARAT
E

7.63 X 5.39 X 3.61 MM
Color Grade
VS 2
Depth 50.5%
Table 13%
Girdle
Medium

Long
EXCELLENT
EXCELLENT
NONE
IGI LG644422685

Comments: This Laboratory Grown Diamond was created by Chemical Vapor Deposition (CVD) growth process.
Type IIa