



INTERNATIONAL GEMOLOGICAL INSTITUTE

ELECTRONIC COPY

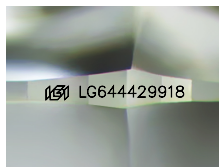
LG644429918



July 22, 2024
 IGI Report Number LG644429918
 ROUND BRILLIANT
 LABORATORY GROWN DIAMOND
 5.87 - 5.89 X 3.68 MM
 Carat Weight 0.79 CARAT
 Color Grade D
 Clarity Grade VVS 2
 Cut Grade EXCELLENT
 Polish EXCELLENT
 Symmetry EXCELLENT
 Fluorescence NONE
 Inscription(s) IGI LG644429918

LABORATORY GROWN DIAMOND REPORT

July 22, 2024
 IGI Report Number LG644429918
 Description LABORATORY GROWN DIAMOND
 Shape and Cutting Style ROUND BRILLIANT
 Measurements 5.87 - 5.89 X 3.68 MM



Sample Image Used

Comments: As Grown - No indication of post-growth treatment. This Laboratory Grown Diamond was created by High Pressure High Temperature (HPHT) growth process. Type II

GRADING RESULTS

Carat Weight 0.79 CARAT
 Color Grade D
 Clarity Grade VVS 2
 Cut Grade EXCELLENT

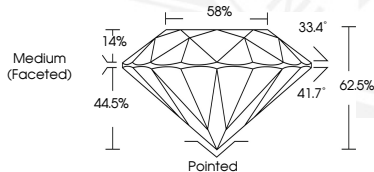
ADDITIONAL GRADING INFORMATION

Polish EXCELLENT
 Symmetry EXCELLENT
 Fluorescence NONE
 Inscription(s) IGI LG644429918

Comments: As Grown - No indication of post-growth treatment. This Laboratory Grown Diamond was created by High Pressure High Temperature (HPHT) growth process. Type II



July 22, 2024
 IGI Report Number LG644429918
 ROUND BRILLIANT
 LABORATORY GROWN DIAMOND
 5.87 - 5.89 X 3.68 MM
 Carat Weight 0.79 CARAT
 Color Grade D
 Clarity Grade VVS 2
 Cut Grade EXCELLENT
 Polish EXCELLENT
 Symmetry EXCELLENT
 Fluorescence NONE
 Inscription(s) IGI LG644429918



THIS DOCUMENT WAS PRODUCED WITH THE FOLLOWING SECURITY MEASURES: SPECIAL DOCUMENT PAPER, INK SCREENS, WATERMARK, BACKGROUND DESIGNS, HOLOGRAM AND OTHER SECURITY FEATURES NOT LISTED AND DO EXCEED DOCUMENT SECURITY INDUSTRY GUIDELINES.

For terms & conditions and to verify this report, please visit www.igi.org