



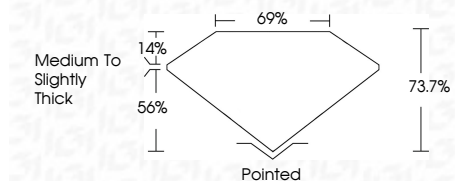
ELECTRONIC COPY

LG644430683 Report verification at igi.org



July 25, 2024 IGI Report Number LG644430683 Description LABORATORY GROWN DIAMOND Shape and Cutting Style PRINCESS CUT Measurements 7.21 X 7.07 X 5.21 MM

GRADING RESULTS Carat Weight 2.44 CARATS Color Grade E Clarity Grade VS 1

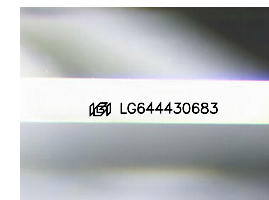


ADDITIONAL GRADING INFORMATION Polish EXCELLENT Symmetry EXCELLENT Fluorescence NONE Inscription(s) LG644430683 Comments: This Laboratory Grown Diamond was created by Chemical Vapor Deposition (CVD) growth process. Type IIa



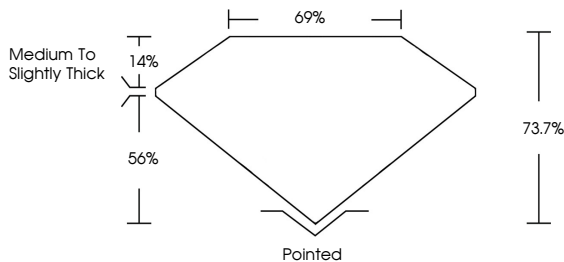
July 25, 2024 IGI Report No. LG644430683 PRINCESS CUT 2.44 CARATS E VS 1 73.7% 69% Medium to Slightly Thick Pointed EXCELLENT EXCELLENT NONE NONE LG644430683

Comments: This Laboratory Grown Diamond was created by Chemical Vapor Deposition (CVD) growth process. Type IIa

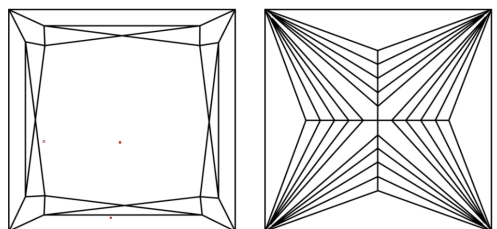


Sample Image Used

PROPORTIONS



CLARITY CHARACTERISTICS



KEY TO SYMBOLS Red symbols indicate internal characteristics. Green symbols indicate external characteristics.

COLOR

Color scale from D to J, with 'Faint', 'Very Light', and 'Light' labels.

CLARITY

Clarity scale from IF to I 1-3, with 'Internally Flawless', 'Very Very Slightly Included', 'Very Slightly Included', 'Slightly Included', and 'Included' labels.



July 25, 2024 IGI Report Number LG644430683 Description LABORATORY GROWN DIAMOND Shape and Cutting Style PRINCESS CUT Measurements 7.21 X 7.07 X 5.21 MM GRADING RESULTS Carat Weight 2.44 CARATS Color Grade E Clarity Grade VS 1 ADDITIONAL GRADING INFORMATION Polish EXCELLENT Symmetry EXCELLENT Fluorescence NONE Inscription(s) LG644430683

Comments: This Laboratory Grown Diamond was created by Chemical Vapor Deposition (CVD) growth process. Type IIa