



ELECTRONIC COPY

LG644433463
Report verification at igi.org



July 24, 2024
IGI Report Number LG644433463
Description LABORATORY GROWN DIAMOND
Shape and Cutting Style CUT CORNERED RECTANGULAR MODIFIED BRILLIANT
Measurements 9.49 X 6.79 X 4.69 MM
GRADING RESULTS
Carat Weight 2.57 CARATS
Color Grade H
Clarity Grade VS 1

LABORATORY GROWN DIAMOND REPORT

July 24, 2024
IGI Report Number LG644433463
Description LABORATORY GROWN DIAMOND
Shape and Cutting Style CUT CORNERED RECTANGULAR MODIFIED BRILLIANT
Measurements 9.49 X 6.79 X 4.69 MM

GRADING RESULTS

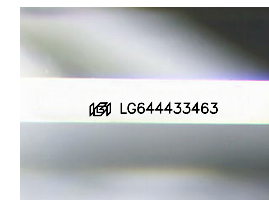
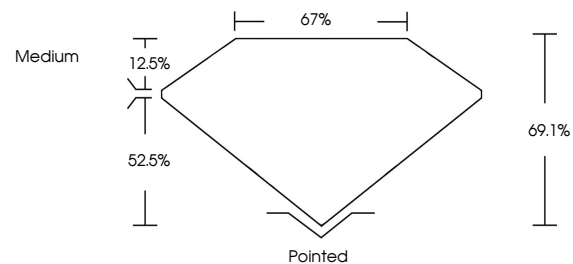
Carat Weight 2.57 CARATS
Color Grade H
Clarity Grade VS 1

ADDITIONAL GRADING INFORMATION

Polish EXCELLENT
Symmetry EXCELLENT
Fluorescence NONE
Inscription(s) LG644433463

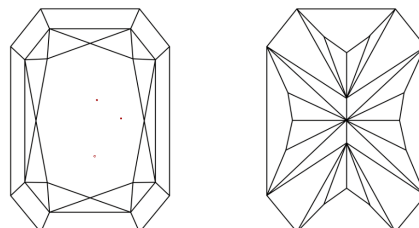
Comments: This Laboratory Grown Diamond was created by Chemical Vapor Deposition (CVD) growth process. Type IIa

PROPORTIONS



Sample Image Used

CLARITY CHARACTERISTICS



KEY TO SYMBOLS

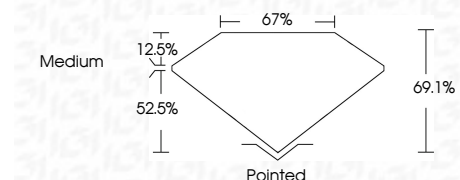
Red symbols indicate internal characteristics.
Green symbols indicate external characteristics.

COLOR

D E F G H I J Faint Very Light Light

CLARITY

IF VS 1-2 VS 1-2 SI 1-2 I 1-3
Internally Flawless Very Very Slightly Included Very Slightly Included Slightly Included Included



ADDITIONAL GRADING INFORMATION

Polish EXCELLENT
Symmetry EXCELLENT
Fluorescence NONE
Inscription(s) LG644433463
Comments: This Laboratory Grown Diamond was created by Chemical Vapor Deposition (CVD) growth process. Type IIa



July 24, 2024
IGI Report No LG644433463
CUT CORNERED RECT. MODIFIED BRILLIANT
9.49 X 6.79 X 4.69 MM
2.57 CARATS
H
VS 1
69.1%
67%
Medium
Pointed
EXCELLENT
EXCELLENT
NONE
IGI LG644433463
Comments: This Laboratory Grown Diamond was created by Chemical Vapor Deposition (CVD) growth process. Type IIa