



ELECTRONIC COPY

LABORATORY GROWN DIAMOND REPORT

July 24, 2024
IGI Report Number LG644434415
Description LABORATORY GROWN DIAMOND
Shape and Cutting Style PRINCESS CUT
Measurements 8.64 X 8.56 X 5.96 MM

GRADING RESULTS

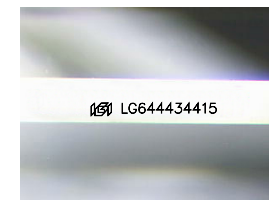
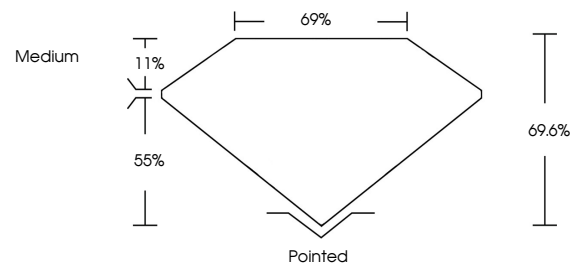
Carat Weight 3.82 CARATS
Color Grade E
Clarity Grade VS 2

ADDITIONAL GRADING INFORMATION

Polish EXCELLENT
Symmetry EXCELLENT
Fluorescence NONE
Inscription(s) IGI LG644434415

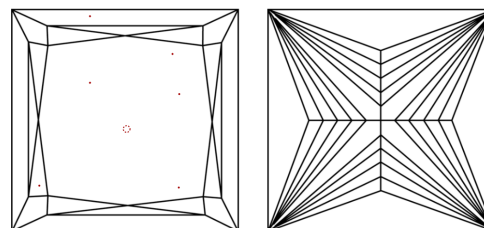
Comments: This Laboratory Grown Diamond was created by Chemical Vapor Deposition (CVD) growth process.
Type IIa

PROPORTIONS



Sample Image Used

CLARITY CHARACTERISTICS



KEY TO SYMBOLS

Red symbols indicate internal characteristics.
Green symbols indicate external characteristics.

COLOR

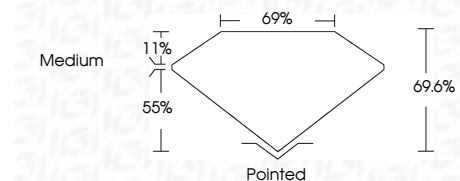
D E F G H I J Faint Very Light Light

CLARITY

IF VS 1-2 VS 1-2 SI 1-2 I 1-3
Internally Flawless Very Very Slightly Included Very Slightly Included Slightly Included Included



July 24, 2024
IGI Report Number LG644434415
Description LABORATORY GROWN DIAMOND
Shape and Cutting Style PRINCESS CUT
Measurements 8.64 X 8.56 X 5.96 MM
GRADING RESULTS
Carat Weight 3.82 CARATS
Color Grade E
Clarity Grade VS 2



ADDITIONAL GRADING INFORMATION

Polish EXCELLENT
Symmetry EXCELLENT
Fluorescence NONE
Inscription(s) IGI LG644434415
Comments: This Laboratory Grown Diamond was created by Chemical Vapor Deposition (CVD) growth process.
Type IIa



IGI



July 24, 2024
IGI Report No LG644434415
PRINCESS CUT
8.64 X 8.56 X 5.96 MM
3.82 CARATS
E
VS 2
69.6%
69%
Medium
Pointed
EXCELLENT
EXCELLENT
NONE
IGI LG644434415
Comments: This Laboratory Grown Diamond was created by Chemical Vapor Deposition (CVD) growth process.
Type IIa