



ELECTRONIC COPY

LG644434600 Report verification at igi.org

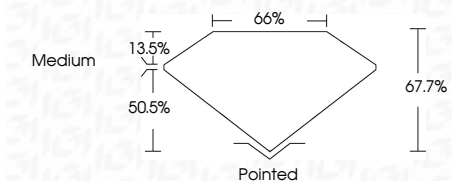


July 31, 2024 IGI Report Number LG644434600 Description LABORATORY GROWN DIAMOND Shape and Cutting Style CUT CORNERED RECTANGULAR MODIFIED BRILLIANT

Measurements 8.36 X 5.61 X 3.80 MM

GRADING RESULTS

Carat Weight 1.54 CARAT Color Grade E Clarity Grade VVS 2



ADDITIONAL GRADING INFORMATION

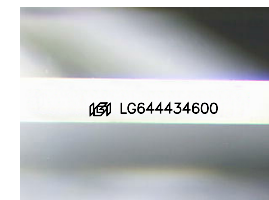
Polish EXCELLENT Symmetry EXCELLENT Fluorescence NONE Inscription(s) LG644434600

Comments: This Laboratory Grown Diamond was created by Chemical Vapor Deposition (CVD) growth process. Type IIa



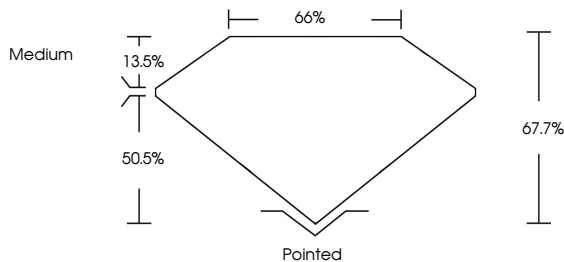
July 31, 2024 IGI Report No LG644434600 CUT CORNERED RECT. MODIFIED BRILLIANT 1.54 CARAT E VVS 2 67.7% 65% Medium Pointed EXCELLENT EXCELLENT NONE NONE LG644434600

Comments: This Laboratory Grown Diamond was created by Chemical Vapor Deposition (CVD) growth process. Type IIa

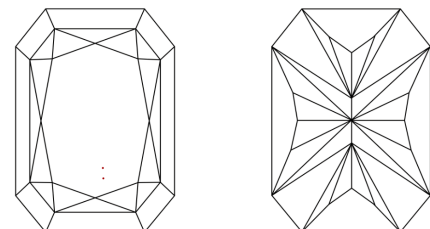


Sample Image Used

PROPORTIONS



CLARITY CHARACTERISTICS



KEY TO SYMBOLS

Red symbols indicate internal characteristics. Green symbols indicate external characteristics.

COLOR

Color scale from D to J, with Faint, Very Light, and Light labels.

CLARITY

Clarity scale from IF to I 1-3, with Internally Flawless, Very Very Slightly Included, Very Slightly Included, Slightly Included, and Included labels.



LABORATORY GROWN DIAMOND REPORT

July 31, 2024 IGI Report Number LG644434600 Description LABORATORY GROWN DIAMOND Shape and Cutting Style CUT CORNERED RECTANGULAR MODIFIED BRILLIANT Measurements 8.36 X 5.61 X 3.80 MM

GRADING RESULTS

Carat Weight 1.54 CARAT Color Grade E Clarity Grade VVS 2

ADDITIONAL GRADING INFORMATION

Polish EXCELLENT Symmetry EXCELLENT Fluorescence NONE Inscription(s) LG644434600

Comments: This Laboratory Grown Diamond was created by Chemical Vapor Deposition (CVD) growth process. Type IIa