



**INTERNATIONAL
GEMOLOGICAL
INSTITUTE**

ELECTRONIC COPY

LG644437077



July 23, 2024
IGI Report Number LG644437077
**CUT CORNERED RECTANGULAR
MODIFIED BRILLIANT
LABORATORY GROWN DIAMOND**
6.72 X 4.52 X 3.12 MM
 Carat Weight **0.79 CARAT**
 Color Grade **E**
 Clarity Grade **VVS 2**
 Polish **EXCELLENT**
 Symmetry **EXCELLENT**
 Fluorescence **NONE**
 Inscription(s) **IGI LG644437077**
 Comments: This Laboratory Grown
 Diamond was created by
 Chemical Vapor Deposition (CVD)
 growth process. Type IIa

LABORATORY GROWN DIAMOND REPORT

July 23, 2024
 IGI Report Number **LG644437077**
 Description **LABORATORY GROWN DIAMOND**
 Shape and Cutting Style **CUT CORNERED RECTANGULAR MODIFIED
BRILLIANT**
 Measurements **6.72 X 4.52 X 3.12 MM**

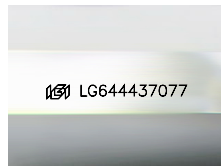
GRADING RESULTS

Carat Weight **0.79 CARAT**
 Color Grade **E**
 Clarity Grade **VVS 2**

ADDITIONAL GRADING INFORMATION

Polish **EXCELLENT**
 Symmetry **EXCELLENT**
 Fluorescence **NONE**
 Inscription(s) **IGI LG644437077**

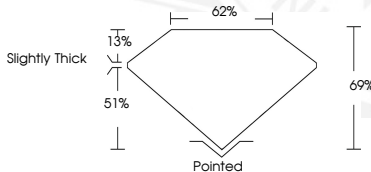
Comments: This Laboratory Grown Diamond was created by
 Chemical Vapor Deposition (CVD) growth process.
 Type IIa



Sample Image Used



July 23, 2024
IGI Report Number LG644437077
**CUT CORNERED RECTANGULAR
MODIFIED BRILLIANT
LABORATORY GROWN DIAMOND**
6.72 X 4.52 X 3.12 MM
 Carat Weight **0.79 CARAT**
 Color Grade **E**
 Clarity Grade **VVS 2**
 Polish **EXCELLENT**
 Symmetry **EXCELLENT**
 Fluorescence **NONE**
 Inscription(s) **IGI LG644437077**
 Comments: This Laboratory Grown
 Diamond was created by
 Chemical Vapor Deposition (CVD)
 growth process. Type IIa



THIS DOCUMENT WAS PRODUCED WITH THE FOLLOWING SECURITY MEASURES: SPECIAL DOCUMENT PAPER, INK SCREENS, WATERMARK, BACKGROUND DESIGN, HOLOGRAM AND OTHER SECURITY FEATURES NOT LISTED AND DO EXCEED DOCUMENT SECURITY INDUSTRY GUIDELINES.

For terms & conditions and to verify this report, please visit www.igi.org