



ELECTRONIC COPY

LG644438025
Report verification at igi.org



July 23, 2024

IGI Report Number **LG644438025**

Description **LABORATORY GROWN DIAMOND**

Shape and Cutting Style **CUT CORNERED
RECTANGULAR MODIFIED
BRILLIANT**

Measurements **8.21 X 5.80 X 3.87 MM**

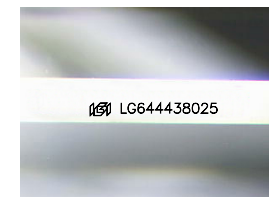
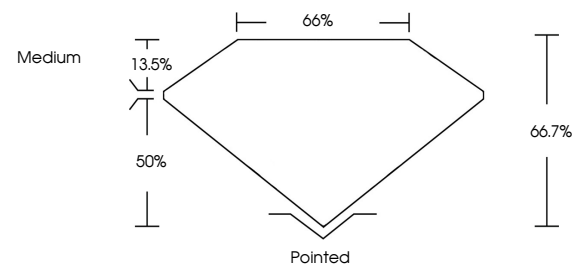
GRADING RESULTS

Carat Weight **1.56 CARAT**

Color Grade **F**

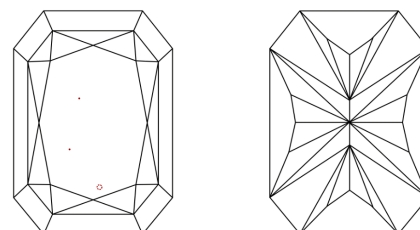
Clarity Grade **VVS 2**

PROPORTIONS



Sample Image Used

CLARITY CHARACTERISTICS



KEY TO SYMBOLS

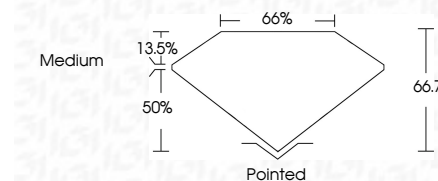
Red symbols indicate internal characteristics.
Green symbols indicate external characteristics.

COLOR

D E F G H I J Faint Very Light Light

CLARITY

IF	VS ¹⁻²	VS ¹⁻²	SI ¹⁻²	I ¹⁻³
Internally Flawless	Very Very Slightly Included	Very Slightly Included	Slightly Included	Included



ADDITIONAL GRADING INFORMATION

Polish **EXCELLENT**

Symmetry **EXCELLENT**

Fluorescence **NONE**

Inscription(s) **(LGI) LG644438025**

Comments: This Laboratory Grown Diamond was created by Chemical Vapor Deposition (CVD) growth process.
Type IIa



IGI



July 23, 2024
IGI Report No. LG644438025
CUT CORNERED RECT. MODIFIED BRILLIANT
8.21 X 5.80 X 3.87 MM
Carat Weight 1.56 CARAT
Color Grade F
Clarity Grade VVS 2
Depth 66.7%
Table 13.5%
Girdle Medium
Culet Pointed
Polish EXCELLENT
Symmetry EXCELLENT
Fluorescence NONE
Inscription(s) (LGI) LG644438025

Comments: This Laboratory Grown Diamond was created by Chemical Vapor Deposition (CVD) growth process.
Type IIa