



ELECTRONIC COPY

LG644438425
Report verification at igi.org



August 22, 2024

IGI Report Number **LG644438425**

Description **LABORATORY GROWN DIAMOND**

Shape and Cutting Style **PRINCESS CUT**

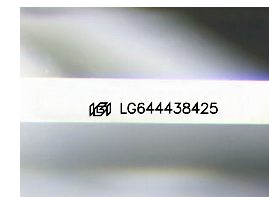
Measurements **8.10 X 7.99 X 5.45 MM**

GRADING RESULTS

Carat Weight **3.09 CARATS**

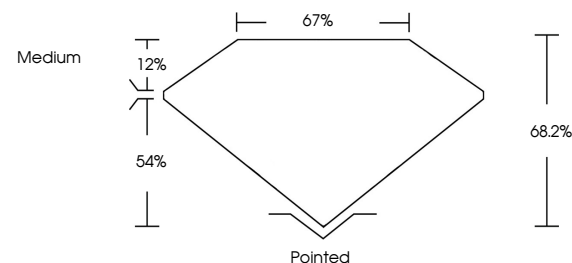
Color Grade **G**

Clarity Grade **VS 1**

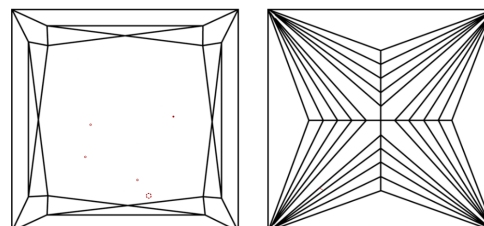


Sample Image Used

PROPORTIONS



CLARITY CHARACTERISTICS



KEY TO SYMBOLS

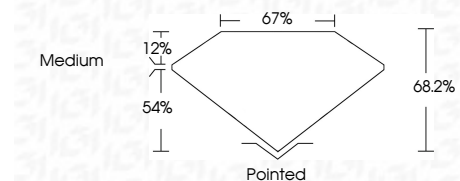
Red symbols indicate internal characteristics.
Green symbols indicate external characteristics.

COLOR

D E F G H I J Faint Very Light Light

CLARITY

IF	VS ¹⁻²	VS ¹⁻²	SI ¹⁻²	I ¹⁻³
Internally Flawless	Very Very Slightly Included	Very Slightly Included	Slightly Included	Included



ADDITIONAL GRADING INFORMATION

Polish **EXCELLENT**

Symmetry **EXCELLENT**

Fluorescence **NONE**

Inscription(s) **IGI LG644438425**

Comments: This Laboratory Grown Diamond was created by Chemical Vapor Deposition (CVD) growth process.
Type IIa



IGI



August 22, 2024
IGI Report No. LG644438425
PRINCESS CUT

3.09 CARATS
G

8.10 X 7.99 X 5.45 MM
Color Grade G
Clarity Grade VS 1
Depth 68.2%
Table 54%
Girdle 67%
Medium

Pointed
EXCELLENT
EXCELLENT
NONE
IGI LG644438425

Comments: This Laboratory Grown Diamond was created by Chemical Vapor Deposition (CVD) growth process.
Type IIa