



ELECTRONIC COPY

LG644441862
Report verification at igi.org



July 23, 2024
IGI Report Number **LG644441862**
Description **LABORATORY GROWN DIAMOND**
Shape and Cutting Style **ROUND BRILLIANT**
Measurements **9.78 - 9.85 X 6.08 MM**
GRADING RESULTS
Carat Weight **3.64 CARATS**
Color Grade **G**
Clarity Grade **VVS 1**
Cut Grade **IDEAL**

July 23, 2024
IGI Report Number **LG644441862**
Description **LABORATORY GROWN DIAMOND**
Shape and Cutting Style **ROUND BRILLIANT**
Measurements **9.78 - 9.85 X 6.08 MM**

GRADING RESULTS

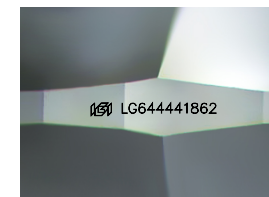
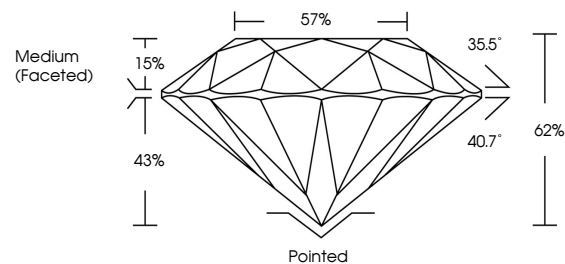
Carat Weight **3.64 CARATS**
Color Grade **G**
Clarity Grade **VVS 1**
Cut Grade **IDEAL**

ADDITIONAL GRADING INFORMATION

Polish **EXCELLENT**
Symmetry **EXCELLENT**
Fluorescence **NONE**
Inscription(s) **LG644441862**

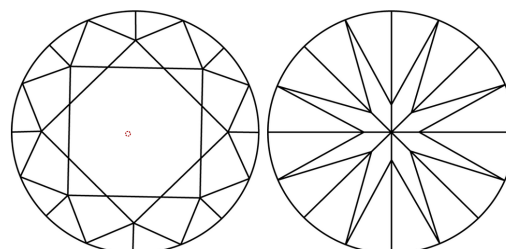
Comments: HEARTS & ARROWS
As Grown - No indication of post-growth treatment.
This Laboratory Grown Diamond was created by High Pressure High Temperature (HPHT) growth process.
Type II
Faint Blue

PROPORTIONS



Sample Image Used

CLARITY CHARACTERISTICS



KEY TO SYMBOLS

Red symbols indicate internal characteristics.
Green symbols indicate external characteristics.

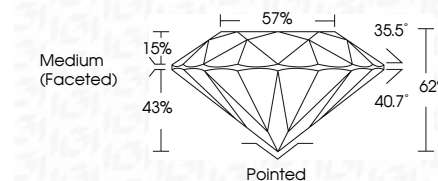


COLOR

D E F G H I J Faint Very Light Light

CLARITY

IF	VS ¹⁻²	VS ¹⁻²	SI ¹⁻²	I ¹⁻³
Internally Flawless	Very Very Slightly Included	Very Slightly Included	Slightly Included	Included



ADDITIONAL GRADING INFORMATION

Polish **EXCELLENT**
Symmetry **EXCELLENT**
Fluorescence **NONE**
Inscription(s) **LG644441862**
Comments: HEARTS & ARROWS
As Grown - No indication of post-growth treatment.
This Laboratory Grown Diamond was created by High Pressure High Temperature (HPHT) growth process.
Type II
Faint Blue



IGI

July 23, 2024
IGI Report No LG644441862
ROUND BRILLIANT
9.78 - 9.85 X 6.08 MM
3.64 CARATS
G
VVS 1
IDEAL
G2%
57%
Medium (Faceted)Pointed
EXCELLENT
EXCELLENT
NONE
IGI LG644441862
Comments: HEARTS & ARROWS
As Grown - No indication of post-growth treatment.
This Laboratory Grown Diamond was created by High Pressure High Temperature (HPHT) growth process.
Type II
Faint Blue