



**ELECTRONIC COPY**

LG644441884  
Report verification at igi.org



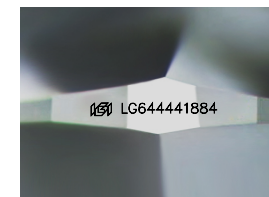
July 30, 2024

IGI Report Number **LG644441884**  
Description **LABORATORY GROWN DIAMOND**  
Shape and Cutting Style **SQUARE CUSHION MODIFIED  
BRILLIANT**

Measurements **5.68 X 5.45 X 3.66 MM**

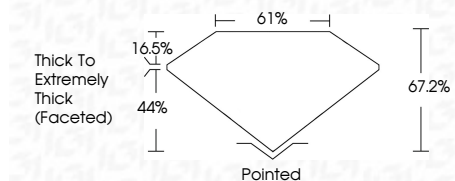
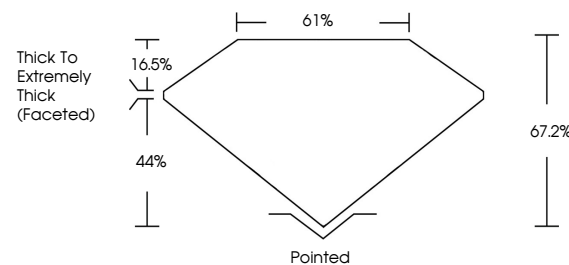
**GRADING RESULTS**

Carat Weight **1.06 CARAT**  
Color Grade **FANCY VIVID PINK**  
Clarity Grade **SI 1**

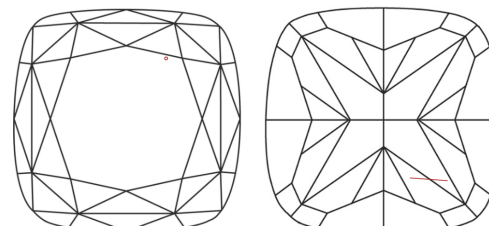


Sample Image Used

**PROPORTIONS**



**CLARITY CHARACTERISTICS**



**KEY TO SYMBOLS**

Red symbols indicate internal characteristics.  
Green symbols indicate external characteristics.

**COLOR**

D E F G H I J Faint Very Light Light

**CLARITY**

IF	VS <sup>1-2</sup>	VS <sup>1-2</sup>	SI <sup>1-2</sup>	I <sup>1-3</sup>
Internally Flawless	Very Very Slightly Included	Very Slightly Included	Slightly Included	Included

**ADDITIONAL GRADING INFORMATION**

Polish **EXCELLENT**  
Symmetry **EXCELLENT**  
Fluorescence **SLIGHT**  
Inscription(s) **IGI LG644441884**

Comments: This Laboratory Grown Diamond was created by Chemical Vapor Deposition (CVD) growth process. Indications of post-growth treatment.



July 30, 2024  
IGI Report No LG644441884  
SQUARE CUSHION MODIFIED BRILLIANT

5.68 X 5.45 X 3.66 MM  
1.06 CARAT  
FANCY VIVID PINK  
SI 1  
67.2%  
61%  
Thick To Extremely Thick (Faceted)

Pointed  
EXCELLENT  
EXCELLENT  
SLIGHT  
IGI LG644441884

Comments: This Laboratory Grown Diamond was created by Chemical Vapor Deposition (CVD) growth process. Indications of post-growth treatment.