



ELECTRONIC COPY

LG644442899
Report verification at igi.org



July 25, 2024

IGI Report Number **LG644442899**

Description **LABORATORY GROWN DIAMOND**

Shape and Cutting Style **EMERALD CUT**

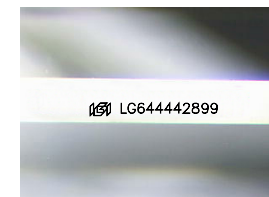
Measurements **7.18 X 4.76 X 3.01 MM**

GRADING RESULTS

Carat Weight **1.01 CARAT**

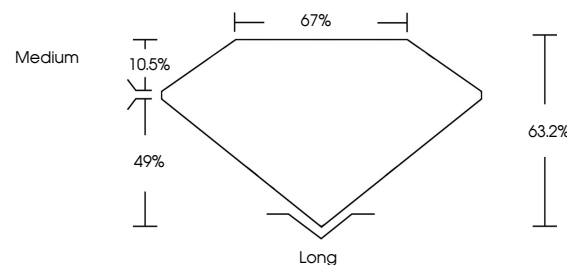
Color Grade **D**

Clarity Grade **VS 1**

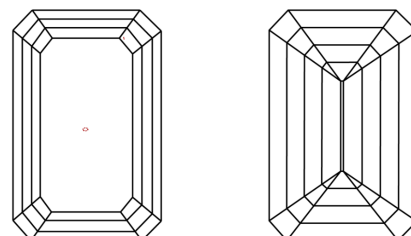


Sample Image Used

PROPORTIONS



CLARITY CHARACTERISTICS



KEY TO SYMBOLS

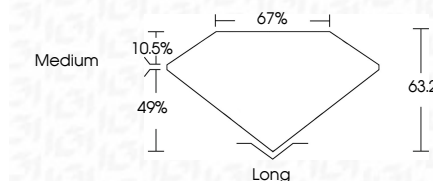
Red symbols indicate internal characteristics.
Green symbols indicate external characteristics.

COLOR

D E F G H I J Faint Very Light Light

CLARITY

IF	VS ¹⁻²	VS ¹⁻²	SI ¹⁻²	I ¹⁻³
Internally Flawless	Very Very Slightly Included	Very Slightly Included	Slightly Included	Included



ADDITIONAL GRADING INFORMATION

Polish **EXCELLENT**

Symmetry **EXCELLENT**

Fluorescence **NONE**

Inscription(s) **IGI LG644442899**

Comments: This Laboratory Grown Diamond was created by Chemical Vapor Deposition (CVD) growth process. Type IIa



IGI



July 25, 2024
IGI Report No. LG644442899
EMERALD CUT

1.01 CARAT
D

7.18 X 4.76 X 3.01 MM

Color Grade D
Clarity Grade VS 1
Depth 49%
Table 10.5%
Girdle Medium

Long
EXCELLENT
EXCELLENT
NONE
IGI LG644442899

Comments: This Laboratory Grown Diamond was created by Chemical Vapor Deposition (CVD) growth process. Type IIa