



ELECTRONIC COPY

LG644444839
Report verification at igi.org



July 24, 2024
IGI Report Number LG644444839
Description LABORATORY GROWN DIAMOND
Shape and Cutting Style CUT CORNERED RECTANGULAR MODIFIED BRILLIANT
Measurements 7.07 X 4.95 X 3.17 MM
GRADING RESULTS
Carat Weight 1.00 CARAT
Color Grade F
Clarity Grade VVS 2

LABORATORY GROWN DIAMOND REPORT

July 24, 2024
IGI Report Number LG644444839
Description LABORATORY GROWN DIAMOND
Shape and Cutting Style CUT CORNERED RECTANGULAR MODIFIED BRILLIANT
Measurements 7.07 X 4.95 X 3.17 MM

GRADING RESULTS

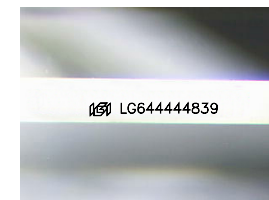
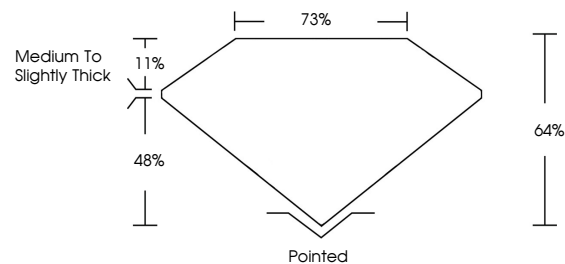
Carat Weight 1.00 CARAT
Color Grade F
Clarity Grade VVS 2

ADDITIONAL GRADING INFORMATION

Polish EXCELLENT
Symmetry EXCELLENT
Fluorescence NONE
Inscription(s) IGI LG644444839

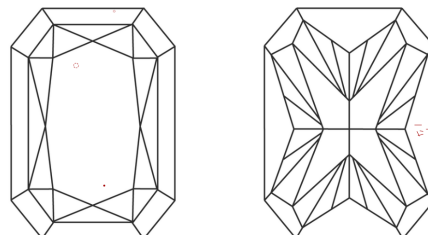
Comments: This Laboratory Grown Diamond was created by Chemical Vapor Deposition (CVD) growth process. Type IIa

PROPORTIONS



Sample Image Used

CLARITY CHARACTERISTICS



KEY TO SYMBOLS

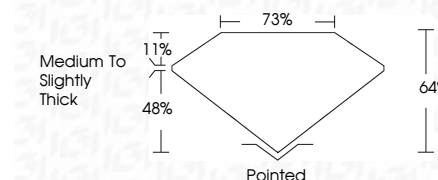
Red symbols indicate internal characteristics.
Green symbols indicate external characteristics.

COLOR

D E F G H I J Faint Very Light Light

CLARITY

IF VVS 1-2 VS 1-2 SI 1-2 I 1-3
Internally Flawless Very Very Slightly Included Very Slightly Included Slightly Included Included



ADDITIONAL GRADING INFORMATION

Polish EXCELLENT
Symmetry EXCELLENT
Fluorescence NONE
Inscription(s) IGI LG644444839
Comments: This Laboratory Grown Diamond was created by Chemical Vapor Deposition (CVD) growth process. Type IIa



July 24, 2024
IGI Report No LG644444839
CUT CORNERED RECT. MODIFIED BRILLIANT
7.07 X 4.95 X 3.17 MM
1.00 CARAT F
VVS 2
64% 75%
Medium to Slightly Thick
Pointed
EXCELLENT EXCELLENT
NONE
IGI LG644444839
Comments: This Laboratory Grown Diamond was created by Chemical Vapor Deposition (CVD) growth process. Type IIa