



ELECTRONIC COPY

LG644444907 Report verification at igi.org



August 1, 2024

IGI Report Number LG644444907

Description LABORATORY GROWN DIAMOND

Shape and Cutting Style PRINCESS CUT

Measurements 5.72 X 5.67 X 4.41 MM

GRADING RESULTS

Carat Weight 1.28 CARAT

Color Grade FANCY VIVID PINK

Clarity Grade VVS 2

August 1, 2024
IGI Report Number LG644444907
Description LABORATORY GROWN DIAMOND
Shape and Cutting Style PRINCESS CUT
Measurements 5.72 X 5.67 X 4.41 MM

GRADING RESULTS

Carat Weight 1.28 CARAT

Color Grade FANCY VIVID PINK

Clarity Grade VVS 2

ADDITIONAL GRADING INFORMATION

Polish EXCELLENT

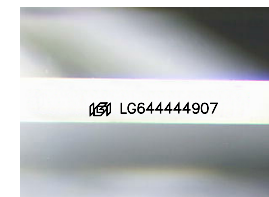
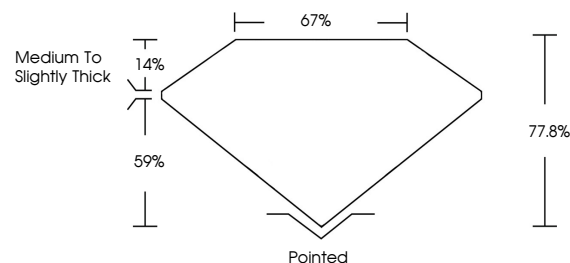
Symmetry VERY GOOD

Fluorescence SLIGHT

Inscription(s) IGI LG644444907

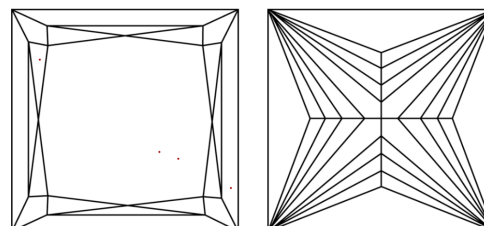
Comments: This Laboratory Grown Diamond was created by Chemical Vapor Deposition (CVD) growth process. Indications of post-growth treatment.

PROPORTIONS



Sample Image Used

CLARITY CHARACTERISTICS



KEY TO SYMBOLS

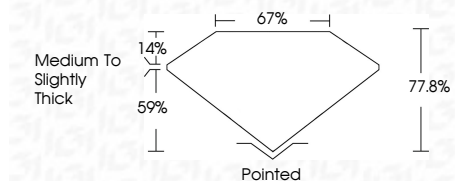
Red symbols indicate internal characteristics. Green symbols indicate external characteristics.

COLOR

D E F G H I J Faint Very Light Light

CLARITY

Table with 5 columns: IF (Internally Flawless), VS 1-2 (Very Slightly Included), VS 1-2 (Very Slightly Included), SI 1-2 (Slightly Included), I 1-3 (Included)



ADDITIONAL GRADING INFORMATION

Polish EXCELLENT

Symmetry VERY GOOD

Fluorescence SLIGHT

Inscription(s) IGI LG644444907

Comments: This Laboratory Grown Diamond was created by Chemical Vapor Deposition (CVD) growth process. Indications of post-growth treatment.



Summary of report details including date, report number, description, measurements, grading results, and additional information.

Comments: This Laboratory Grown Diamond was created by Chemical Vapor Deposition (CVD) growth process. Indications of post-growth treatment.