



ELECTRONIC COPY

LG644445120
Report verification at igi.org



July 24, 2024
IGI Report Number **LG644445120**
Description **LABORATORY GROWN DIAMOND**
Shape and Cutting Style **CUT CORNERED
RECTANGULAR MODIFIED
BRILLIANT**
Measurements **8.54 X 6.08 X 4.06 MM**
GRADING RESULTS
Carat Weight **1.78 CARAT**
Color Grade **E**
Clarity Grade **VS 2**

July 24, 2024
IGI Report Number **LG644445120**
Description **LABORATORY GROWN DIAMOND**
Shape and Cutting Style **CUT CORNERED RECTANGULAR
MODIFIED BRILLIANT**
Measurements **8.54 X 6.08 X 4.06 MM**

GRADING RESULTS

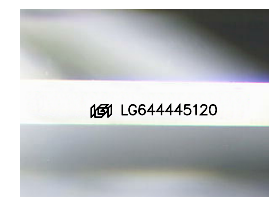
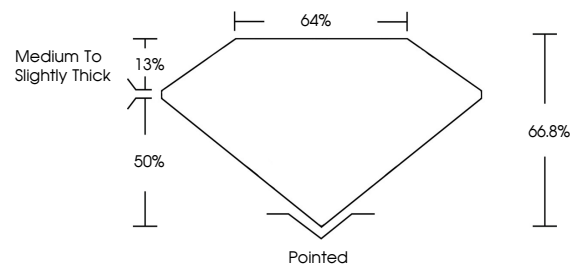
Carat Weight **1.78 CARAT**
Color Grade **E**
Clarity Grade **VS 2**

ADDITIONAL GRADING INFORMATION

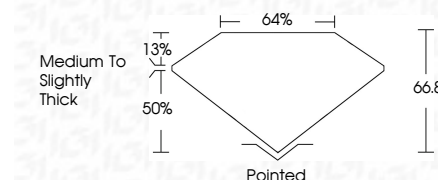
Polish **EXCELLENT**
Symmetry **EXCELLENT**
Fluorescence **NONE**
Inscription(s) **IGI LG644445120**

Comments: This Laboratory Grown Diamond was created by Chemical Vapor Deposition (CVD) growth process.
Type IIa

PROPORTIONS



Sample Image Used



ADDITIONAL GRADING INFORMATION

Polish **EXCELLENT**
Symmetry **EXCELLENT**
Fluorescence **NONE**
Inscription(s) **IGI LG644445120**
Comments: This Laboratory Grown Diamond was created by Chemical Vapor Deposition (CVD) growth process.
Type IIa

COLOR

D E F G H I J Faint Very Light Light

CLARITY

IF	VS ¹⁻²	VS ¹⁻²	SI ¹⁻²	I ¹⁻³
Internally Flawless	Very Very Slightly Included	Very Slightly Included	Slightly Included	Included



IGI

July 24, 2024
IGI Report No **LG644445120**
CUT CORNERED RECT. MODIFIED BRILLIANT
8.54 X 6.08 X 4.06 MM
Carat Weight **1.78 CARAT**
Color Grade **E**
Clarity Grade **VS 2**
Table **66.8%**
Girdle **4/5%**
Culet **Medium to Slightly Thick**
Polish **Pointed**
Symmetry **EXCELLENT**
Fluorescence **NONE**
Inscription(s) **IGI LG644445120**

Comments: This Laboratory Grown Diamond was created by Chemical Vapor Deposition (CVD) growth process.
Type IIa